

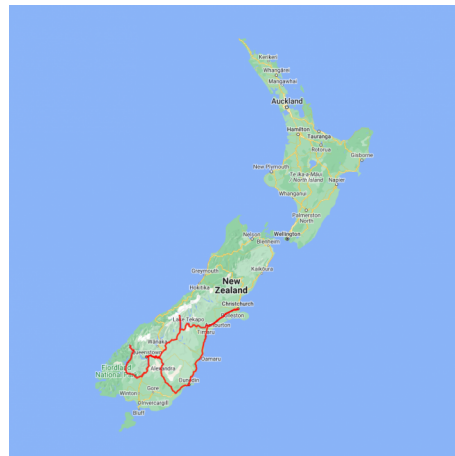


5 day Dunedin, Queenstown, Milford Sound and Mt. Cook

This 5 day highlights tour includes Dunedin, Milford Sound including a cruise plus time in wonderful Queenstown before returning to Christchurch via Mt Cook National Park.

Starts in: Christchurch
Finishes in: Christchurch
Length: 5days / 4nights
Accommodation: Hotel 4 star
Can be customised: Yes

This itinerary can be customised to suit you perfectly. We can add more days, remove days, change accommodations, mix it up, add activities to suit your interests or simply design and create something from scratch. Call us today to get your custom New Zealand itinerary underway.



Inclusions:

Includes: All coach transport
Includes: All pick ups/drop offs at destinations
Includes: Comprehensive tour pack (detailed itinerary, driving, instructions, map/guidebooks, brochures)
Includes: 24/7 support while touring in New Zealand
Included activity: Christchurch to Dunedin by InterCity Coach
Included activity: Dunedin Coach Stop to Accommodation Transfer with Iconic
Included activity: Dunedin Accommodation to Coach Stop Transfer with Iconic
Included activity: Dunedin to Queenstown by InterCity Coach
Included activity: Taxi Transfer from Intercity Coach Stop to Queenstown Accommodation
Included activity: Milford Sound Cruise and coach tour from Queenstown
Included activity: Queenstown to Christchurch via Mt Cook & Lake Tekapo with Cheeky Kiwi
4 breakfasts

Day 1



Christchurch to Dunedin by InterCity Coach

Leaving Christchurch early, you will cross the vast Canterbury Plains as you head South, crossing many braided rivers that start their life as glacial melt water high in the Southern Alps. New Zealand's longest bridge at Rakaia crosses such an example. Pass through the towns of Timaru followed by Oamaru, most famous for its buildings constructed with the unique locally quarried white stone. Continue along the coast and into the city of Dunedin.

Dunedin Coach Stop to Accommodation Transfer with Iconic

On arrival into Dunedin you will be met from your coach and transferred to your accommodation.

SUGGESTED ACTIVITY - Larnach Castle and Gardens

Larnach is New Zealand's only Castle, built in 1871 by politician and merchant, William Larnach, a man of great vision who helped shape New Zealand's early history. It was built for William's beloved first wife Eliza; it took 200 workmen three years to build the shell and a further twelve years were spent by master craftsmen to embellish the interior. The Castle is located high up on the Otago Peninsula and looks down on Dunedin city giving beautiful views. The gardens have an International Garden of Significance status and have a unique collection of antiques, including a unique nine piece Totara knot suite. The Ballroom cafe is a fantastic place to rest and reflect on all you have seen while enjoying a delicious range of refreshments. As with the entire castle, the ballroom had an interesting and varied history prior to its beautiful restoration, uses ranged from an asylum, antique sales room to the penning of sheep. In this self guided exploration of the castle and gardens, you are free to discover on your own.

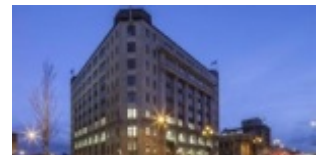
SUGGESTED ACTIVITY - Blue Penguins 90 minute Experience with Blue Penguins Pukekura

At dusk, enjoy close up viewing of little penguins returning from a day at sea within the Takiharuru Pilots Beach nature reserve. Watch penguins just a few metres from you as they scurry up the beach to their cliff-face burrows, often stopping just metres away, allowing for awesome viewing and photography of these birds in their natural habitat.

The tour includes a special "behind the scenes" walk through the reserve prior to the penguins emerging from the sea to learn about the flora and fauna of the area. Learn about the endemic plants, their use by early Māori, and see the restoration work of the habitat that benefits penguins and other wildlife. Blue Penguins Pukekura tours are hosted by local expert wildlife guides who share the rich cultural history of the area while also sharing biological knowledge of endemic flora and fauna.

Your accommodation: Distinction Dunedin Hotel

Distinction Dunedin Hotel occupies the grand Chief Post Office built in the 1930's. This art deco inspired building has recently been transformed into a 4 star hotel with elegant décor, set in the heart of the city.



Day 2



Dunedin Accommodation to Coach Stop Transfer with Iconic

You will be collected from your accommodation and transferred to the coach stop in time for your departure.

Dunedin to Queenstown by InterCity Coach

Your coach trip today takes you through the Otago Goldfields of yesteryear. The townships of Lawrence, Roxburgh and Alexandra were once booming gold rush towns, with populations many times more than their current small town image would imply. Alexandra and Roxburgh in more recent times have become well known for the delicious stone fruit that is grown here. The road follows the South Island's longest river, the Clutha River, and at Clyde you will see one of the largest hydro power stations harnessing its energy. The Kawarau River carves a steep and rugged gorge through to Gibbston where some of the finest Pinot Noirs can be sampled. It's also the home of the world's first commercial bungy jumping operation at the historic Kawarau Suspension Bridge and a great viewing platform. Continuing through Lake Hayes you soon arrive into the bustling alpine adventure town of Queenstown.

Taxi Transfer from Intercity Coach Stop to Queenstown Accommodation

Your accommodation: Millennium Hotel Queenstown

Right in the heart of the action, the Millennium Hotel is just minutes from Queenstown's central shopping and entertainment district. Outdoor activities such as bungy jumping, white water rafting and jet boating are just some of the easily accessible activities nearby in New Zealand's adventure capital.

Meals included: Breakfast



Day 3



Milford Sound Cruise and coach tour from Queenstown

Return luxury coach transport from Queenstown to Milford Sound, with a 1 hour 40 minute Cruise along the full length of the fiord. On boarding a Real Journeys luxury glass-roofed coach in Queenstown or Te Anau, you will enjoy a relaxing trip along the shores of Lake Wakatipu and through the rolling countryside to Te Anau. The coach driver provides an informative commentary. After a morning tea break in Te Anau, where you have the option of purchasing refreshments, the coach continues along the spectacular Milford Road. There is time for photo stops and short walks along the way. On reaching Milford Sound, you board the modern, spacious vessel for a leisurely cruise in the fiord. The cruise provides excellent viewing opportunities and plenty of time is available to enjoy waterfalls, rainforest, mountains and the wildlife. During the cruise your friendly crew provide commentaries in several languages and point out the sights such as Mitre Peak and the Pembroke Glacier.

Your accommodation: Millennium Hotel Queenstown

Right in the heart of the action, the Millennium Hotel is just minutes from Queenstown's central shopping and entertainment district. Outdoor activities such as bungy jumping, white water rafting and jet boating are just some of the easily accessible activities nearby in New Zealand's adventure capital.

Meals included: Breakfast



Day 4



Free day in Queenstown

Although celebrated as New Zealand's 'adventure capital', Queenstown offers far more than a fast-paced, action-packed holiday. Settled on the shores of Lake Wakatipu beneath a soaring panorama of the Remarkables Mountain Range, this alpine town is surrounded by a plethora of historic, gastronomic, and scenic wonders. Whether you are looking for a scenic short walk or a longer one, you will find the perfect hike or bike trail in Queenstown. Explore Queenstown Gardens, or try out more challenging trails up to Ben Lomond Walkway or Queenstown Hill Walking Track. Enjoy iconic views and take Queenstown Gondola up 450 metres to Bob's Peak, or ride on the 100-year-old Steamship - the TSS Earnslaw - to Walter Peak Station for dinner and a farm tour. Browse the waterfront cafes and al fresco restaurants, try out the famous Fergburger, or grab a dessert at Patagonia Chocolates.

SUGGESTED ACTIVITY - Queenstown Skyline Gondola Ride

Hop aboard the Skyline Gondola - the steepest cable car lift in the Southern Hemisphere! From which you can take in the awe-inspiring views of this spectacular landscape. Sit back and relax as you enjoy panoramic views of The Remarkables, Walter Peak, Cecil Peak, Coronet Peak and the magnificent Lake Wakatipu.

SUGGESTED ACTIVITY - TSS Earnslaw cruise to Walter Peak including gourmet BBQ dinner and a farm tour

Enjoy a quintessential Kiwi experience, a delicious gourmet BBQ buffet meal and a farm demonstration in a stunning lakeside setting. Take in the stunning views of Lake Wakatipu and its surroundings as you cruise across the lake to the historic Walter Peak high country farm aboard the TSS Earnslaw Steamship.

Enjoy the ambience of the heart of the stately homestead while your Colonel's Homestead Restaurant chef prepares a gourmet BBQ dinner. Your seasonal menu includes an extensive selection of local New Zealand produce, including succulent meats and a selection of delicious vegetables and salads. Complete your meal with your choice of delicious desserts, New Zealand cheeses, tea and coffee. After dinner, watch the farm dogs in action with a sheep-herding demonstration and say hello to the other farm animals. Finally, cruise home under the southern stars and enjoy the fresh night air as the lights of Queenstown draw ever closer.

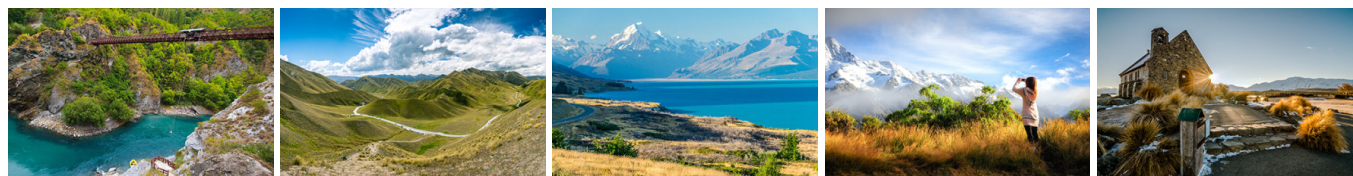
Your accommodation: Millennium Hotel Queenstown

Right in the heart of the action, the Millennium Hotel is just minutes from Queenstown's central shopping and entertainment district. Outdoor activities such as bungy jumping, white water rafting and jet boating are just some of the easily accessible activities nearby in New Zealand's adventure capital.

Meals included: Breakfast



Day 5



Queenstown to Christchurch via Mt Cook & Lake Tekapo with Cheeky Kiwi

This small group, fully-guided day trip combines all of the key highlights in the area with magnificent views of the famous Lake Tekapo, Aoraki/Mount Cook National Park and Tasman Glacier. The ultimate way to get from Queenstown to Christchurch. Led by famously passionate tour guides, notorious for bringing your journey to life by sharing their stories and rich background knowledge and run in modern, comfortable minibuses packed with extras ensuring your comfort and safety.

Tour details

Departures:	Daily
Tour type:	Independant Bus & Coach
Starts:	Christchurch
Finishes:	Christchurch
Tour length:	5
Accommodation:	Hotel 4 star
Car/transport type:	

Included activities

Includes	All coach tour transport as specified in this tour package
Includes	All breakfasts

Accommodation summary

Day 1	Distinction Dunedin Hotel
Day 2	Millennium Hotel Queenstown
Day 3	Millennium Hotel Queenstown
Day 4	Millennium Hotel Queenstown