

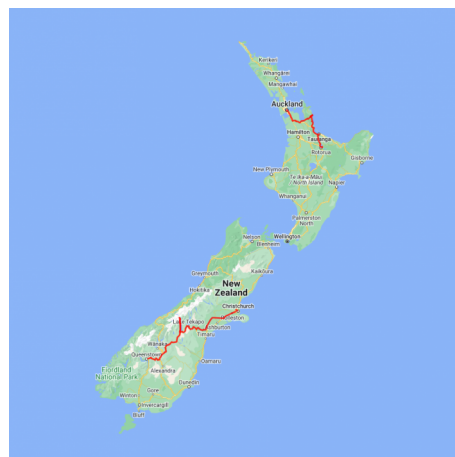


The Essence of New Zealand

This 14 day itinerary ensures you get to experience the 'essence' of each island, from the City of Sails, to the golden sand beaches of the Coromandel and the adventure and culture of Rotorua. Then fly South to experience the Southern Alps, its mountains, lakes, fiords and unrivalled hospitality.

Starts in: Auckland
Finishes in: Christchurch
Length: 14days / 13nights
Accommodation: Boutique Lodges & Hotels
Can be customised: Yes

This itinerary can be customised to suit you perfectly. We can add more days, remove days, change accommodations, mix it up, add activities to suit your interests or simply design and create something from scratch. Call us today to get your custom New Zealand itinerary underway.



Inclusions:

Includes: Late model rental cars

Includes: Unlimited kms

Includes: Airport & ferry terminal rental car fees

Includes: Comprehensive tour pack (detailed itinerary, driving instructions, map/guidebooks, brochures)

Included activity: Private Transfer Auckland Airport to Auckland accommodation with Tourcorp

Included activity: Glacier Explorers

Included activity: Te Pā Tū Evening Maori Cultural Experience - Dinner Included

Included activity: Dart River Wilderness Jet

Includes: Fully inclusive rental car insurance (excess may apply)

Includes: GPS navigation

Includes: Additional drivers

Includes: 24/7 support while touring New Zealand

Included activity: Electronic Travel Guide and In-Country Support App

Included activity: Coast and Rainforest Full Day Tour with Bush and Beach (includes lunch)

Included activity: TSS Earnslaw Cruise and Walter Peak Gourmet BBQ Dining

: 13 breakfasts, 1 lunch, 2 special dinners

Day 1



Private Transfer Auckland Airport to Auckland Accommodation

You will be met at the Auckland airport by the driver and transferred to your Auckland accommodation.

Welcome to Auckland

Auckland, New Zealand's self-proclaimed "City of Sails" is the country's largest metro area. Resting between the Pacific Ocean and the Tasman Sea, this urban paradise has something for everyone. Surrounded by native bush, rainforests, and an abundance of beaches, Auckland is a playground for both the city savvy and those with an eye for adventure. Explore the central museums and galleries on foot, or get out onto the water to experience the best views of the city.

SUGGESTED ACTIVITY - Harbour Sailing Dinner Cruise with Explore

This unique on-water sailing and dining experience is not to be missed while you're in Auckland. Enjoy smooth sailing on the Waitemata Harbour - then watch this photogenic city come alive with twinkling lights. Enjoy your meal as you sail around the beautiful Auckland Harbour taking in the view as the sun slowly sets. You'll be treated to canapes and a drink as you set off towards Westhaven Marina. Choose between dining in the downstairs cabin or on deck to take in the iconic sights of the Auckland Harbour. To finish the evening off, savour your dessert course as you leisurely sail back to Auckland's vibrant Viaduct Harbour.

SUGGESTED ACTIVITY - Wētā Workshop Unleashed

Explore worlds of horror, sci-fi and fantasy in the making. An exciting, realistic, and authentic experience, with three fully developed and original film concepts: A nail-biting horror Fauna, a fantasy epic Age of the Ever-Clan, and the mind-bending sci-fi Origins.

A 90-minute guided experience through fully themed environments, including immersive horror, fantasy, and sci-fi story worlds. Be immersed by a specially-created unique sweeping cinematic soundtrack, animatronic creatures, physical and digital interactives, hyper-realistic sculpted giants and characters, a horror house experience, and much more.

SUGGESTED ACTIVITY - All Blacks Experience

See what it takes to make, shape and be an All Black. Experience first-hand the excitement and emotion of game day. Discover the stories behind some of world rugby's most famous players, moments and matches.

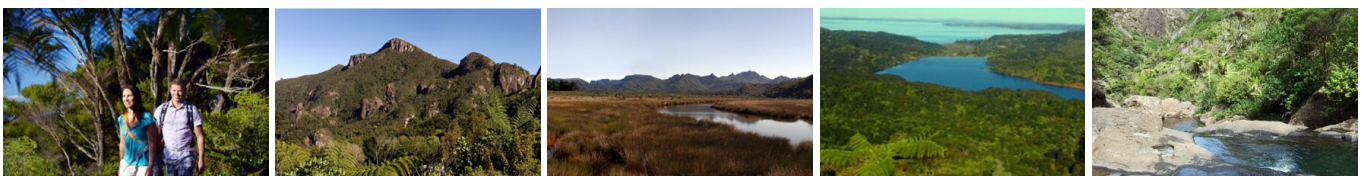
This guided experience introduces you to the game of rugby before being lead through state-of-the-art displays combining sound, images, interactive technology and hands-on activities. Discover New Zealand's deep passion for our national sport, experience the full force of the All Blacks haka, tackle interactive zones where you can try out your kicking, catching, line-out and accuracy skills against legendary All Blacks.

Your accommodation: Fable Auckland

Located right on Queen Street the Fable Auckland is boutique and stylish property with an ideal location to enjoy and explore the vibrant heart of the 'City of Sails'.



Day 2



Coast and Rainforest Full Day Tour with Bush and Beach (includes lunch)

Your full day excursion takes you first to the Arataki Visitor Centre, gateway to the Waitakere Ranges and a short drive from Auckland Central. Enjoy panoramic views extending from the Tasman Sea to the Pacific Ocean as you absorb the area's history and admire the magnificent traditional Maori carvings. Walk the regenerating rainforest where your experienced guide will detail local flora and fauna. Take in the giant tree ferns, and bubbling streams before venturing onto a wild west coast beach. Enjoy a picnic lunch before your eco-tour ends in an area of untamed original rainforest. Here, mature 200-300 year old kauri trees have developed separately from the rest of the world for millions of years and this part of the rainforest is particularly rich in bird life due to a successful programme to eradicate pests.

Your accommodation: Fable Auckland

Located right on Queen Street the Fable Auckland is boutique and stylish property with an ideal location to enjoy and explore the vibrant heart of the 'City of Sails'.

Meals included: Breakfast, Lunch



Day 3



Collect your rental car

This tour can be priced with any of the rental cars available in our fantastic range, from economy hatchbacks to prestige saloons and SUV's.

Auckland to Pauanui

Leaving Auckland you will travel through rolling green Waikato countryside and across the fertile Hauraki Plains. Your drive will take you near the Firth of Thames, a haven for wildlife, in particular, the shorebirds at Miranda. Arriving into the historic gold town of Thames you then cross the Southern Coromandel Ranges and onto the scenic east coast of the peninsula, littered with white sandy beaches.

If you prefer the scenic route, head north from Thames up to the Coromandel Township, following Highway 25 around the peninsula past Kuaotunu and Whitianga, with a stop at Hot Water Beach and Cathedral Cove.

Your destination of Pauanui meaning big Paua in Maori, lies at the mouth of the Tairua River on its south bank, directly opposite the larger town of Tairua.

SUGGESTED ACTIVITY - Driving Creek Railway & Potteries - EyeFull Tower Tour

Driving Creek Railway and Potteries has become a Coromandel icon. The dream of Barry Brickell was to establish a pottery workshop on his land. Using a railway he would have access to the clay on the land and the pine kiln fuel. Over the next 15 years the railway developed until in 1990 it was finally licensed to carry fare paying passengers and ever since thousands of visitors have made the trip to Coromandel to experience this unique attraction. The 1 hour return train trip on the innovatively designed trains takes you through replanted native kauri forest and includes 2 spirals, 3 short tunnels, 5 reversing points and several large viaducts as it climbs up to the mountain-top terminus. The pottery is still producing and you can watch the artists at work as well as purchase items.

Your accommodation: Grand Mercure Puka Park Resort

Puka Park Resort is situated on the eastern side of the Coromandel Peninsula. Nestled amongst 25 acres of New Zealand's most beautiful native bush this prestigious hideaway offers luxury and seclusion at its best.

Meals included: Breakfast



Day 4



Tairua

Tairua is a small seaside town and fishing village sitting on a natural harbour. The dominant feature is Paku Hill and extinct volcanic cone that stands at the harbour entrance. Great views of the town ship and the Pacific Ocean can be enjoyed from the look out at the top. With numerous white sandy beaches, cafes and restaurants this is a great place to spend some relaxing time. Dive trips to the Alderman Islands depart from here.

Hot Water Beach

Hot Water Beach derives its name from the geothermally heated water that continually seeps in through the sands. At low tide you can dig a hole and create your own mineral pool. The beach itself is golden, fine sand and is an ideal place to relax.

SUGGESTED ACTIVITY - Kiwi Dundee adventures Nature and Coast day tour

A photographer's dream! A delightful sample of Coromandel Peninsula's natural heritage and scenic beauty. Enjoy the flora and fauna of the semi-tropical rainforest with giant ferns, kauri trees and crystal clear streams. Visit the old historic gold caves sparkling with glowworms and hear the fascinating history of this magic area. Visit stunning coastal scenery with white sand beaches, magnificent cliffs decorated with ancient Pohutukawa trees, old Maori pa sites and offshore islands. A visit to Hot Water Beach [tide permitting]. Lunch is included and will be a delightful picnic or a visit to our favourite cafe. The Nature and Coast day walk is their most popular walk and is a gentle walk suitable for everyone including children.

Your accommodation: Grand Mercure Puka Park Resort

Puka Park Resort is situated on the eastern side of the Coromandel Peninsula. Nestled amongst 25 acres of New Zealand's most beautiful native bush this prestigious hideaway offers luxury and seclusion at its best.

Meals included: Breakfast



Day 5



Pauanui to Rotorua via Tauranga

Leaving Pauanui, head south to New Zealand's surfing mecca. In addition to lazing on the beach or surfing, Whangamata offers big game fishing, walking and mountain biking in native and exotic forests. Continuing on to Tauranga you will arrive into the harbourside city in the Bay of Plenty region. It hosts historic buildings like the Elms Mission Station, an 1847 Georgian-style home. A bridge over the harbour connects Tauranga to Mount Maunganui, a beach town with hot saltwater pools and an extinct namesake volcano with winding walking paths. Finally, you will arrive into the City of Rotorua. The regions geothermal activity becomes evident as you see steam rising from the roadside and surrounding hills. Considered the cultural centre for the Maori people, Rotorua is the ideal place to gain an insight into the history and culture. Visit the local museum located in the government gardens or the nearby Ohinemutu Village, the original site of the first Maori settlers in the area or enjoy a traditional Maori "Hangi" meal and a cultural performance. Of course, Rotorua is also a great place to enjoy many other activities including, fishing, 4WD trips, relaxing spa treatments, mountain biking, walking and hiking plus helicopter and float plane trips.

Your accommodation: On the Point

On the Point is a beautiful lodge accommodation in a stunning location and offering panoramic views. It also offers gourmet New Zealand food and wine, as well as a range of on site activities from pampering massage, fly fishing from the private beach, water sports, tennis, gym and boating and is only 10 minutes from the heart of Rotorua City.

Meals included: Breakfast



Day 6



Explore Rotorua

Peppered with natural hot springs, boiling mud pools and steaming geysers, Rotorua sits within one of the worlds most active volcanic regions. Geothermal landmarks aside, this city of sulphur has a rich indigenous history. Home to several prominent Maori tribes, a visit to one of the Maori Villages should be high on your agenda, as should an excursion to the Polynesian Spa for an invigorating soak in its natural mineral hot springs.

Spike your adrenaline at Velocity Valley Adventure Park on stomach-dropping attractions such as static skydiving, or a giant swing reaching 130 km per hour. Alternatively, head up the Rotorua Gondola for soaring lake views, and ride the luge at night for an extra thrill.

Fans of Lord of the Rings and The Hobbit should drive to nearby Matamata and experience the actual movie set "Hobbiton". Make the most of your time in Rotorua with an excursion through the Wai-O-Tapu Thermal Wonderland, one of the area's most colourful volcanic attractions.

SUGGESTED ACTIVITY - Orakei Korako Hidden Valley with Volcanic Air Safaris by floatplane

From above Mount Tarawera impressive views include vast volcanic rifts, distant national parks and our treasured lakes. Flying south on a floatplane, you will gain an appreciation of what local Maori refer to as the 'Sisters of Fire'. Here, volcanic activity has pierced the earth surface across the fault-line forming the reserves of Waimangu and Wai-O-Tapu which, when viewed from above, display a spectacular palette of nature's most vibrant colours. Landing at Orakei Korako, 'the Hidden Valley', is an amazing opportunity to experience hot springs, gushing geysers and the natural beauty of this geothermal wonderland.

Te Pā Tū Evening Maori Cultural Experience

New Zealand's Most Awarded Cultural Attraction, presenting Te Pā Tū. Feast on song, drama, tradition, and divine seasonal kai (cuisine) within the forest Pā (village) blanketed by towering Tawa trees, blazing bonfires, and a forest-formed amphitheatre. Te Pā Tū shares Māori history, traditions, and cultural aspirations across 4-hours of celebration and feasting. These events change with each season of the maramataka, the Māori lunar calendar.

SUGGESTED ACTIVITY - Wai-O-Tapu Thermal Wonderland

Wai-O-Tapu Thermal Wonderland is a spectacular showcase of New Zealand's most colourful and unique geothermal elements sculpted by thousands of years of volcanic activity. You are introduced to a uniquely different natural landscape – the key to what you see lies below the surface – one of the most extensive geothermal systems in New Zealand, extending over 18-sq. km. Enjoy viewing unique volcanic features as you walk at your own pace along well-defined tracks. Relax in the first-class Visitor Centre, home to the Gift Shop and Café facilities. Visit the Mud Pool, the largest in New Zealand, it was originally the site of a large mud volcano which was destroyed through erosion in the 1920s. See the history and beauty of the Lady Knox Geyser at 10:15 am every day. Lady Knox Geyser provides a unique opportunity to see an eruption to heights of 10 to 20 metres.

Your accommodation: On the Point

On the Point is a beautiful lodge accommodation in a stunning location and offering panoramic views. It also offers gourmet New Zealand food and wine, as well as a range of on site activities from pampering massage, fly fishing from the private beach, water sports, tennis, gym and boating and is only 10 minutes from the heart of Rotorua City.

Meals included: Breakfast, Speciality Dinner



Day 7



Return your vehicle to Rotorua Airport

Drop your rental car at Rotorua airport before continuing your onward journey.

SUGGESTED ACTIVITY - Air New Zealand flight Rotorua to Queenstown

Collect your rental car

This tour can be priced with any of the rental cars available in our fantastic range, from economy hatchbacks to prestige saloons and SUV's.

Your accommodation: Sofitel Queenstown

The stunning five-star Sofitel Queenstown is located in the heart of New Zealand's premier four season lake and alpine resort. New Zealand's very first Sofitel, this luxury boutique hotel occupies one of the best locations to get the most from the vibrant town.

Meals included: Breakfast



Day 8



Explore Queenstown

Well-known as New Zealand's 'adventure capital', Queenstown is home to a range of adventures, from the world's first and most famous bungy jumps to jet boat thrills, white-water rafting, and skydiving. However, Queenstown offers far more than a fast-paced, action-packed holiday. Settled on the shores of beautiful Lake Wakatipu beneath a soaring panorama of the Remarkables Mountain Range, this alpine town is surrounded by a plethora of historic, gastronomic, and scenic wonders. Take a stroll through the beautiful lakefront parks and gardens, browse through market stalls on weekends, dine in wonderful al-fresco restaurants, or ride on the 100-year-old historic Steamship - TSS Earnslaw to Walter Peak Station. Take the Queenstown Gondola up to Bob's Peak and soak up the panoramic views of the magnificent lake and mountain ranges. And after all of that, if you do want the adrenaline rush, Queenstown is known for taking your pick from the Shotover Jet, Canyon Swing, Zipline, Luge, or Heli-ski.

SUGGESTED ACTIVITY - Full Day Routeburn Guided Walk with Nomad Safaris

The Routeburn track is rated one of the world's 'Top 10 Classic Hikes', combining the thrill of personal achievement with awe-inspiring natural landscapes and unique wildlife. Your day begins as you are picked up from your accommodation and set off on the picturesque Queenstown-Glenorchy road alongside Lake Wakatipu. Passing Glenorchy you will drive through the aptly named Paradise before entering the Mt Aspiring National Park, which hosts the beginning of the Routeburn track. The smooth, flat path will take you through spectacular beech forest where you may spot the Mohua (yellowhead) and Rifleman birds flitting through the trees. The track follows the Routeburn River to the west as it roars through a breathtaking gorge. You will climb a gradual ascent on your walk through the 130-million-year-old forest towards snow-capped peaks, as your guides share their knowledge of the historical significance of the track and its local flora and fauna.

TSS Earnslaw cruise to Walter Peak including gourmet BBQ dinner and a farm tour

Enjoy a quintessential Kiwi experience, a delicious gourmet BBQ buffet meal and a farm demonstration in a stunning lakeside setting. Take in the stunning views of Lake Wakatipu and its surroundings as you cruise across the lake to the historic Walter Peak high country farm aboard the TSS Earnslaw Steamship.

Enjoy the ambience of the heart of the stately homestead while your Colonel's Homestead Restaurant chef prepares a gourmet BBQ dinner. Your seasonal menu includes an extensive selection of local New Zealand produce, including succulent meats and a selection of delicious vegetables and salads. Complete your meal with your choice of delicious desserts, New Zealand cheeses, tea and coffee. After dinner, watch the farm dogs in action with a sheep-herding demonstration and say hello to the other farm animals. Finally, cruise home under the southern stars and enjoy the fresh night air as the lights of Queenstown draw ever closer.

Your accommodation: Sofitel Queenstown

The stunning five-star Sofitel Queenstown is located in the heart of New Zealand's premier four season lake and alpine resort. New Zealand's very first Sofitel, this luxury boutique hotel occupies one of the best locations to get the most from the vibrant town.

Meals included: Breakfast, Speciality Dinner



Day 9



Dart River Wilderness Jet

Journey deep into the heart of the world-renowned Mt Aspiring National Park, where myth, heritage and fantasy come to life. As one of Queenstown's most exhilarating activities, the Wilderness Jet adventures on a spectacular journey deep into the heart of the world-renowned Mount Aspiring National Park.

Your accommodation: Sofitel Queenstown

The stunning five-star Sofitel Queenstown is located in the heart of New Zealand's premier four season lake and alpine resort. New Zealand's very first Sofitel, this luxury boutique hotel occupies one of the best locations to get the most from the vibrant town.

Meals included: Breakfast



Day 10



Queenstown to Aoraki Mt Cook National Park

Leaving Queenstown you'll head through the Kawarau Gorge and over the historic Kawarau Bridge, a popular bungee jumping location. Choose to participate in this daredevil sport or watch others instead. Continue through Gibbston and be sure to stop at one of its many vineyards for a tasting. As you leave the gorge you'll arrive in Cromwell, known for its many fruit orchards. If you're a foodie at heart, we recommend taking a side trip to Bannockburn for a complete food and wine experience at one of its many award-winning wineries and restaurants.

Cromwell itself sits at the head of the Kawarau Gorge and the old historic town is well worth the visit. Completely submerged when the Clyde Dam was built and Lake Dunstan established in 1992, the remnants of the old Cromwell town provides a unique snapshot into this area's history. Head over through the Lindis Pass, one of New Zealand's highest roads, with the summit reaching 971 metres. It's tussock covered hills are a barren but beautiful sight as you descend into the Mackenzie Basin. You'll go through the towns of Omarama and Twizel, the last stops before you arrive at Lake Pukaki and take the Aoraki Mt Cook Highway to arrive in the small village.

Please note: There are no food shops at Mt Cook, and dinner options are limited to one restaurant. If you wish to self-cater, you must stock up before arriving in Mt Cook, or make dinner reservations in advance.

SUGGESTED ACTIVITY - Sir Edmund Hillary Alpine Centre Museum and Theatre Explorer Pass

A tribute to New Zealand's Sir Edmund Hillary, a humanitarian, ambassador, and one of the world's greatest explorers. The centre showcases the Aoraki Mount Cook region, the history of climbing, and early transport used throughout the region. This comprehensive museum details the life of Sir Edmund Hillary, the Hermitage, and provides access to the 126-seat custom-designed theatre. Check out the daily film schedule which includes 3D Movies, documentaries, and 360-degree digital dome features.

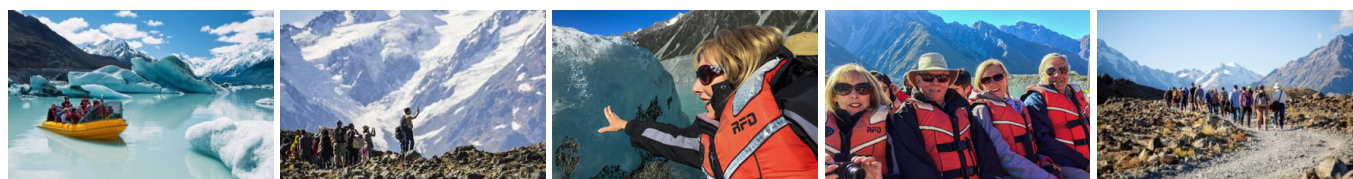
Your accommodation: Hermitage Hotel, Aoraki Wing Premium

The Hermitage Hotel ringed by magnificent snow-capped peaks of the Southern Alps, is a world-renowned tourist destination and has been an icon of superior accommodation and dining since 1884.

Meals included: Breakfast



Day 11



Glacier Explorers Mt. Cook

Experience 500 year old icebergs up-close on the Mt Cook terminal lake. The Glacier Explorers tour is the only one of its kind in New Zealand and one of only three in the world! Very few glaciers terminate into lakes and even fewer of them are accessible. See towering ice cliffs and floating icebergs from the safety of a specially designed boat. These boats provide a safe way to view unseen and inaccessible areas of New Zealand's largest glacier The Tasman.

Walking tracks in and around Aoraki / Mt. Cook National Park

There are many short scenic walks beginning in and around the Mt Cook Village, suitable for all ages and abilities. Located within the Mount Cook Village is the Department of Conservation information centre, where updates on the track conditions and suitability is available as well as information on the history of the area and its wildlife.

Your accommodation: Hermitage Hotel, Aoraki Wing Premium

The Hermitage Hotel ringed by magnificent snow-capped peaks of the Southern Alps, is a world-renowned tourist destination and has been an icon of superior accommodation and dining since 1884.

Meals included: Breakfast



Day 12



Aoraki Mt Cook National Park to Christchurch

Leaving Aoraki Mt Cook National Park, travel a short distance before stopping at the visitor centre on the southern shores of Lake Pukaki. Learn about the formation of the region and take in the spectacular views of Mount Cook. Lake Tekapo also displays the same reflective qualities of Lake Pukaki, making the waters a bright turquoise. You'll go through the small town of Tekapo, home to some of the most photographed subjects in the country, the Church of the Good Shepherd and the Collie Dog statue. It's a great place to take a scenic flight, enjoy a guided horse trek, a boat trip on the pristine lake or just marvel at the magnificent views. From here you travel through Burkes Pass and into the rich farming valley that surrounds Geraldine. Continue on across the vast Canterbury Plains to arrive in Christchurch City, your destination for the night.

SUGGESTED ACTIVITY - Christchurch Gondola

In the Heathcote Valley, just fifteen minutes from the heart of Christchurch City, ride the Christchurch Gondola for nearly a kilometer to the collapsed rim of an extinct volcano, which exploded six million years ago. Take in the spectacular panoramic views of the central city, Lyttelton Harbour, Banks Peninsula, Canterbury Plains, and the distant peaks of the Southern Alps. Wander the summit complex, enjoy a coffee or lunch in the cafe, and choose one of many nature walks to explore or visit the Christchurch Discovery Ridge, a dramatic reconstruction of the history of the Port Hills and Christchurch.

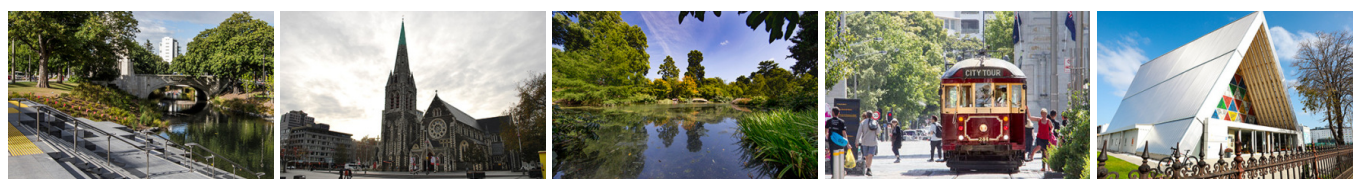
Your accommodation: Hotel Montreal

A true original, Hotel Montreal is a unique, luxury escape in the heart of Christchurch city. Hotel Montreal is often recognised for the five-star comfort and convenience it affords those passing through the Garden City.

Meals included: Breakfast



Day 13



Explore Christchurch City

Following the 2011 earthquake that razed its centre and much of the outlying suburbs, Christchurch is well into a billion-dollar makeover. In the middle of the Canterbury Plains, bordering the Pacific Ocean, New Zealand's newest city is an ideal gateway to exploring the middle of the South.

Go punting on the Avon River, take a historic tram ride, catch the gondola to the rim of an extinct volcano or do all three! See the world's only Cardboard Cathedral and for nature enthusiasts - wander the renowned Christchurch Botanic Gardens, or head to Oxford Terrace in the city to find a great spot to eat or drink.

Drive an hour in any direction to ski, mountain bike, wine taste, whale-watch, bungee jump or play golf. Take the winding Port Hills road to the French settlement of Akaroa and tour the vines in Waipara for an authentic New Zealand wine-tasting experience.

SUGGESTED ACTIVITY - Akaroa Day Tour and Harbour Nature Cruise with Leisure Tours

Enjoy a full day tour to Akaroa with Canterbury Leisure Tours. You will travel the scenic route to Akaroa via Governors Bay, Gebbies Pass, Lake Forsyth and Little River. Stop for spectacular views over the Akaroa Harbour. You'll then take a two hour cruise through Akaroa Harbour for a chance to see this quaint french settlement from the sea as well as dolphins, penguins and seals. On the return journey to Christchurch you will visit the cheese factory at Barry's Bay and sample some of New Zealand's finest cheese.

Lunch at the popular waterfront restaurant 'Bully Hayes' is included offering a wide choice of New Zealand cuisine.

Your accommodation: Hotel Montreal

A true original, Hotel Montreal is a unique, luxury escape in the heart of Christchurch city. Hotel Montreal is often recognised for the five-star comfort and convenience it affords those passing through the Garden City.

Meals included: Breakfast



Day 14



Return your vehicle to Christchurch Airport

Explore more of Christchurch before dropping your rental car at the airport depot and continuing your onward journey.

Tour details

Departures:	Daily
Tour type:	Nationwide Self Drive
Starts:	Auckland
Finishes:	Christchurch
Tour length:	14
Accommodation:	Boutique Lodges & Hotels
Car/transport type:	

Included activities

Includes	2 highlight dinners
Includes	All breakfasts
Includes	Private airport transfers
Includes	Taste of Auckland full day tour
Includes	Mitai Maori Village Concert & Buffet Dinner, Rotorua
Includes	Glacier Explorers Tour, Mt Cook National Park
Includes	TSS Earnslaw cruise and dinner at Walter Peak high country farm, Queenstown
Includes	Dart River Wilderness Safari, Glenorchy

Accommodation summary

Day 1	Fable Auckland
Day 2	Fable Auckland
Day 3	Grand Mercure Puka Park Resort
Day 4	Grand Mercure Puka Park Resort
Day 5	On the Point
Day 6	On the Point
Day 7	Sofitel Queenstown
Day 8	Sofitel Queenstown
Day 9	Sofitel Queenstown
Day 10	Hermitage Hotel, Aoraki Wing Premium
Day 11	Hermitage Hotel, Aoraki Wing Premium
Day 12	Hotel Montreal
Day 13	Hotel Montreal