

South Island Coast to Coast Explorer

Starting and finishing in Christchurch this tour visits Mount Cook National Park, travels through the Southern Lakes region and into the deep south. Time to explore Dunedin and wildlife of the Otago Peninsular before crossing the rich farmland of Southland toward Te Anau and Fiordland National Park. There is a full day to explore Milford Sound including a Real Journeys Nature Cruise. Then to Queenstown for two nights with time to relax or enjoy the countless activities here. The West Coast Glaciers are next and two nights allow time to enjoy one of the many guided walk options or scenic flights. Return to Christchurch aboard the world famous Tranz Alpine Scenic Train.

Starts in: Christchurch
Finishes in: Christchurch
Length: 13days / 12nights
Accommodation: Hotel 3 star
Can be customised: Yes

This itinerary can be customised to suit you perfectly. We can add more days, remove days, change accommodations, mix it up, add activities to suit your interests or simply design and create something from scratch. Call us today to get your custom New Zealand itinerary underway.



Inclusions:

Includes: Late model rental cars

Includes: Unlimited kms

Includes: Airport & ferry terminal rental car fees

Includes: Comprehensive tour pack (detailed itinerary, driving instructions, map/guidebooks, brochures)

Included activity: Private Transfer Christchurch International Airport to Christchurch Accommodation

Included activity: TranzAlpine Scenic Train: Greymouth to Christchurch

Included activity: Private Transfer from Christchurch Accommodation to Christchurch Airport with Christchurch Touring Company
: 12 breakfasts, 1 lunch

Includes: Fully inclusive rental car insurance (excess may apply)

Includes: GPS navigation

Includes: Additional drivers

Includes: 24/7 support while touring New Zealand

Included activity: Electronic Travel Guide and In-Country Support App

Included activity: Shared Transfer from Christchurch Train Station to Christchurch CBD Accommodation with Christchurch Touring Company

Included activity: Milford Sound Cruise with Real NZ - Lunch Included

Day 1



Private Transfer Christchurch International Airport to Christchurch Accommodation

On arrival, you will be met by a private driver and transferred to your Christchurch accommodation.

Welcome to Christchurch City

Christchurch New Zealand's garden city is steadily being transformed into a vibrant urban destination. Encompassing a large green belt, it is known for its wide tree lined avenues and lush gardens. A great way to explore the city or easy way to see the sights or ride the historic trams across town to the renowned botanic gardens and the unique cardboard Transitional Cathedral, that's right it is built of cardboard!

Your accommodation: Scenic Hotel Cotswold

The Scenic Hotel Cotswold is just a few minutes walk to boutique shopping at Merivale and Hagley Park. The distinctive architecture of the Scenic Hotel Cotswold reflects Christchurch's image as the most English of cities outside of England.



Day 2



Collect Rental Car

Choose a car to best suit your needs from our fantastic rental car range. From compact economy, hatchbacks to prestige SUVs.

Explore Christchurch

Following earthquakes that razed its centre and much of the outlying suburbs, Ōtautahi-Christchurch is well into a billion-dollar makeover. In the middle of the Canterbury Plains, bordering the Pacific Ocean, New Zealand's newest city is an ideal gateway to exploring the middle of the South. Go punting on the Avon River, take a historic tram ride, catch the gondola to the rim of an extinct volcano or do all three! See the world's only Cardboard Cathedral and for nature enthusiasts - wander the renowned Christchurch Botanic Gardens, or head to Oxford Terrace in the city to find a great spot to eat or drink. Drive an hour in any direction to ski, mountain bike, wine taste, whale-watch, bungee jump or play golf. Take the winding Port Hills road to the French settlement of Akaroa & Banks Peninsula and tour the vines in Waipara for an authentic New Zealand wine-tasting experience.

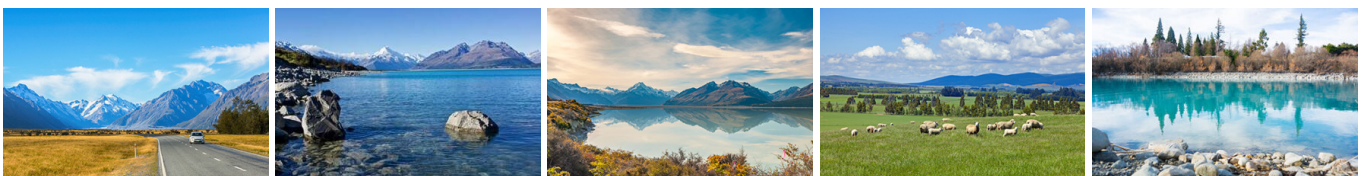
Your accommodation: Scenic Hotel Cotswold

The Scenic Hotel Cotswold is just a few minutes walk to boutique shopping at Merivale and Hagley Park. The distinctive architecture of the Scenic Hotel Cotswold reflects Christchurch's image as the most English of cities outside of England.

Meals included: Breakfast



Day 3



Christchurch to Aoraki-Mt Cook National Park

Drive through the heart of the South Island, crossing the vast Canterbury plains. Catch your breath in Geraldine before continuing through Fairlie. Ascending Burkes pass you'll come to the picturesque town of Lake Tekapo. Follow the road and take in the view of Aoraki-Mt Cook (New Zealand's tallest mountain) from the shores of Lake Pukaki, known for its glacier fed turquoise blue colour. Continue along the lake to your final destination Aoraki-Mt Cook Village.

SUGGESTED ACTIVITY - Glacier Explorers

Experience 500-year-old icebergs up close on the Aoraki-Mt Cook terminal lake. The Glacier Explorers tour is the only one of its kind in New Zealand and one of only three in the world! Very few glaciers terminate into lakes and even fewer of them are accessible. See towering ice cliffs and floating icebergs from the safety of a specially designed boat. These boats provide a safe way to view unseen and inaccessible areas of New Zealand's largest glacier The Tasman.

SUGGESTED ACTIVITY - Sir Edmund Hillary Alpine Centre Museum and Theatre Explorer Pass with Hermitage

A tribute to New Zealand's Sir Edmund Hillary, a humanitarian, ambassador, and one of the world's greatest explorers. The centre showcases the Aoraki Mount Cook region, the history of climbing, and early transport used throughout the region. This comprehensive museum details the life of Sir Edmund Hillary, the Hermitage, and provides access to the 126-seat custom-designed theatre. Check out the daily film schedule which includes 3D Movies, documentaries, and 360-degree digital dome features.

Your accommodation: Hermitage Hotel Room Mount Cook View

The Hermitage Hotel ringed by magnificent snow-capped peaks of the Southern Alps, is a world-renowned tourist destination and has been an icon of superior accommodation and dining since 1884.

Meals included: Breakfast



Day 4



Aoraki Mt Cook National Park to Dunedin

Leave Aoraki Mt Cook National Park and travel past Twizel, one of the locations for the Lord of the Rings films. Go through Omarama, the gliding capital of New Zealand. Continue down the Waitaki Valley follow the hydro power generating system towards the east coast. Stretch your legs in Oamaru, known for its white stone buildings constructed with the local Oamaru Stone and Steampunk influence. If you were a little late off the mark this morning you may get the chance to see the blue penguins come ashore at dusk. Continue south down the coast to Moeraki, and take a detour towards the beach to see the Moeraki Boulders, a unique geological feature well worth a look. As you arrive in Dunedin, take in the city's Edwardian and Scottish heritage reflected in the buildings around the city centre The Octagon.

Your accommodation: Dunedin Leisure Lodge – A Distinction Hotel

Nestled in landscaped gardens, the Heritage Dunedin Leisure Lodge is located within two acres of beautifully kept garden, and just a short drive to the city centre.

Meals included: Breakfast



Day 5



Explore Dunedin and the Otago Peninsula

Known as the Edinburgh of the South, Dunedin City has a heavy Scottish influence. Surrounded by rugged coastal plains and windswept beaches it's home to an eclectic mix of historical and modern architecture as well as industrial technology. Renowned for its Flemish Baroque-inspired 'gingerbread house' Railway Station, this university town is bustling with life. Head to the Saturday farmers market held in the aforementioned railway grounds for a taste of organic produce, handmade crepes and local honey. Explore the many cafes and wine bars in The Octagon, then continue on a self-guided walking tour of the internationally acclaimed Street Art dotted around the city. Drive to the coast and watch the freighters passing in the distance while you sunbathe, or hire a mountain bike and test your legs on one of the many trails available in the area. For a more immersive historical experience, follow the coast to New Zealand's only castle, Larnach Castle. On your way back be sure to head to the Otago Peninsula to see the largest mainland Albatross colony in the world.

SUGGESTED ACTIVITY - Wildlife Peninsula Encounter Tour and Wildlife Cruise with Monarch

Join a small-group bus tour led by a local guide across the Otago Peninsula, featuring stunning harbour views, rural landscapes, and unique wildlife. Visit a remote beach to spot sea lions, take a Monarch Wildlife Cruise to see albatross, seals, and rare seabirds, and explore a Yellow-eyed Penguin conservation reserve with hidden viewing hides. This unforgettable journey blends breathtaking scenery with intimate wildlife encounters before a relaxed return to Dunedin.

SUGGESTED ACTIVITY - Speights Brewery Tour

Founded in 1876, the Speights Brewery still occupies its original Dunedin site - with several of its buildings dating back to the late 1800's. One of the only remaining 'gravity breweries' in the world, this 60-minute tour explains its inner workings. There is an opportunity to taste six different beers as well as bottle, cap and brew your own personal Speights Gold Medal Ale - the brewery's flagship beer.

Your accommodation: Dunedin Leisure Lodge – A Distinction Hotel

Nestled in landscaped gardens, the Heritage Dunedin Leisure Lodge is located within two acres of beautifully kept garden, and just a short drive to the city centre.

Meals included: Breakfast



Day 6



Dunedin to Te Anau (via Invercargill)

The drive to Te Anau takes you through classic Southland farming scenery. Head off-the-beaten-track today and follow the coastline instead of the inland route. Go through The Catlins area and be sure to take a detour to Kaka Point to view its majestic cliffs and pounding surf. If time permits, keep driving towards Nugget Point, iconic for its steep headland with a lighthouse perched atop. Continue through Invercargill to Riverton and Colac Bay, and then head north to Manapouri. From here you can embark on a day or overnight cruise to the remote Doubtful Sound, renowned for its natural beauty. Just a short way further will bring you to your lakeside destination of Te Anau, gateway to Fiordland National Park and Milford Sound.

SUGGESTED ACTIVITY - Te Anau Glowworm Caves with RealNZ

Begin your Te Anau Glowworm experience with a scenic cruise across Lake Te Anau on board the luxury catamaran, Luminosa, to the western side of the lake. On arrival, you'll enter the caves through Cavern House, where informative displays detail the history of this 12,000 year old underground network. You'll then explore by limestone pathway while your guide points out hidden whirlpools, sculpted rock formations, and a rushing underground waterfall. See a magical display of thousands of glowworms as you glide through the darkness in a small boat.

Your accommodation: Distinction Luxmore Hotel

The perfect base for all your Fiordland travel, Distinction Luxmore Hotel provides comfortable accommodation right in the heart of Te Anau.

Meals included: Breakfast



Day 7



Te Anau to Milford Sound, returning to Te Anau

The road to Milford Sound offers some of the most beautiful and iconic scenery in the country. From crystal-clear lakes and towering mountains to lush glacier-formed meadows, this area is dramatic and unyielding. Stretch your legs on the Chasm Walk, a short stroll through native beech forest to see several powerful waterfalls. Continue on through the Homer Tunnel, an engineering marvel at 1219 meters long. Arriving in the village of Milford, you will be greeted with an amazing view of Mitre Peak. A day cruise into the heart of the sound is not to be missed. You'll learn about how this magnificent area was formed and experience the wonder of the falls that line the Fjord before back-tracking the way you came.

Milford Sound Cruise with Real NZ - Lunch Included

Get up close and personal with Milford Sound on a leisurely cruise of this spectacular fiord. From thundering waterfalls to sky-high mountains to lush rainforests, Milford has it all. Experience the spray of a waterfall as you cruise close to sheer rock faces. Informative, participative and relaxed, this is the perfect way to experience Milford Sound to the fullest.

SUGGESTED ACTIVITY - Milford Sound Lunch Cruise on the Fiordland Jewel with Fiordland Discovery

Embark on an unforgettable Milford Sound adventure aboard a boutique catamaran, the Fiordland Jewel. Designed for ultimate comfort and breathtaking views, our small group cruise offers cozy lounges, dining booths, and panoramic sea vistas from the main saloon or the outdoor dining area. Regardless of the weather, you'll be immersed in the stunning scenery and nature that surround you. Our knowledgeable crew will share fascinating stories and point out wildlife such as seals, penguins, and dolphins along the way. Enjoy a delicious lunch prepared by the onboard chef as you sail through the fiord. With ample outdoor space, you can fully experience the tranquility and beauty of Milford Sound.

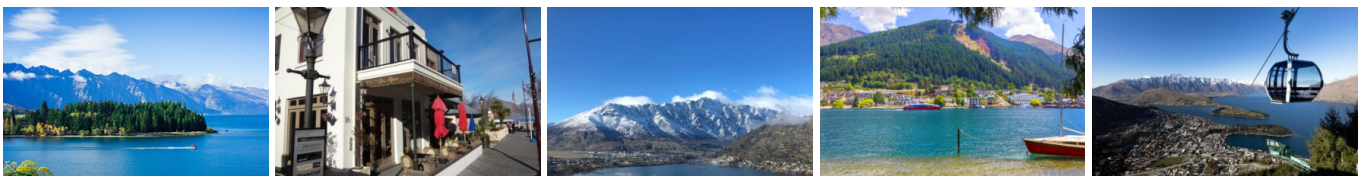
Your accommodation: Distinction Luxmore Hotel

The perfect base for all your Fiordland travel, Distinction Luxmore Hotel provides comfortable accommodation right in the heart of Te Anau.

Meals included: Breakfast, Lunch



Day 8



Te Anau to Queenstown

Journey across expansive tussock lands en route to Queenstown. Pass through Mossburn, renowned as the deer capital of New Zealand, and continue through the picturesque Southland countryside. As the road begins to trace the edge of Lake Wakatipu, marvel at the breathtaking views from the Devil's Staircase. Finally, approach Queenstown, the adventure capital of New Zealand, with the Remarkables mountain range standing majestically in the backdrop.

Your accommodation: Copthorne Hotel & Apartments Queenstown Lakeview

Copthorne Hotel & Apartments Queenstown Lakeview is located on Frankton Road, the main arterial route into Queenstown - With the centre of town only a short 10-minute stroll away.

Meals included: Breakfast



Day 9



Explore Queenstown

Well-known as New Zealand's 'adventure capital', Queenstown is home to a range of adventures, from the world's first and most famous bungy jumps to jet boat thrills, white-water rafting, and skydiving. However, Queenstown offers far more than a fast-paced, action-packed holiday. Settled on the shores of beautiful Lake Wakatipu beneath a soaring panorama of the Remarkables Mountain Range, this alpine town is surrounded by many historic, gastronomic, and scenic wonders. Take a stroll through the beautiful lakefront parks and gardens, browse through market stalls on weekends, dine in wonderful al-fresco restaurants, or ride on the 100-year-old historic Steamship - TSS Earnslaw to Walter Peak Station. Take the Queenstown Gondola up to Bob's Peak and soak up the panoramic views of the magnificent lake and mountain ranges. And after all of that, if you do want the adrenaline rush, Queenstown is known for taking your pick from the Shotover Jet, Canyon Swing, Zipline, Luge, or Heli-hike.

SUGGESTED ACTIVITY - Shotover Jet Canyon Jet Boat Ride

Shotover Jet is the only company permitted to operate in the Shotover River Canyons. It's a thrilling ride! Skim past rocky outcrops at close range in your Shotover Jet 'Big Red', as you twist and turn through the narrow canyons at breathtaking speeds. And a major highlight - hold tight for the world-famous Shotover Jet full 360-degree spins!

SUGGESTED ACTIVITY - Gondola and 3 Luge Rides with Skyline Queenstown

In the heart of Queenstown, located 450 metres above town in the Ben Lomond Scenic Reserve is the Skyline Complex. A gondola ride to the summit makes for awe-inspiring views of the city surround. Arrive at the complex and wander the outside viewing decks for a picture perfect outlook. Then onto the Luge! The 800 metre luge track offers an exhilarating journey through banked corners, tunnels and dippers.

SUGGESTED ACTIVITY - TSS Earnslaw Cruise and Walter Peak Gourmet BBQ Dinner

Enjoy a quintessential Kiwi experience, a delicious gourmet BBQ buffet meal, and a farm demonstration in a stunning lakeside setting. Take in the stunning views of Lake Wakatipu and its surroundings as you cruise across the lake to the historic Walter Peak high country farm aboard the TSS Earnslaw Steamship. Enjoy the ambiance of the heart of the stately homestead while your Colonel's Homestead Restaurant chef prepares a gourmet BBQ dinner. Your seasonal menu includes an extensive selection of local New Zealand produce, including succulent meats and a selection of delicious vegetables and salads. Complete your meal with your choice of delicious desserts, or New Zealand cheeses. After dinner, watch the farm dogs in action with a sheep-herding demonstration and say hello to the other farm animals. Finally, cruise home under the southern stars and enjoy the fresh night air as the lights of Queenstown draw ever closer.

Your accommodation: Copthorne Hotel & Apartments Queenstown Lakeview

Copthorne Hotel & Apartments Queenstown Lakeview is located on Frankton Road, the main arterial route into Queenstown - With the centre of town only a short 10-minute stroll away.

Meals included: Breakfast



Day 10



Queenstown to Fox Glacier

Crossing the Crown Range the highest sealed road in the country, you'll pass through the alpine town of Wanaka. Following the shores of both Lake Wanaka and Hawea, you'll enter the township of Makarora, the gateway to Mt. Aspiring National Park. Stretch your legs on a walk to Blue Pools, a ten-minute stroll through lush rainforest. Marvel at the native beech and countless waterfalls as you continue toward the West Coast.

Crossing the Haast River you are now truly in the Wild West, a 600-kilometre stretch of bush, rainforest and podocarp forest. Continue to arrive at Fox Glacier, your destination for the night. Home to the largest glacier on the west coast, Fox is 13 kilometres long and ends in rainforest only 250 metres above sea level.

Your accommodation: Heartland Hotel Fox Glacier

The Heartland Hotel Fox Glacier is nestled at the base of the majestic Southern Alps, in the Westland World Heritage Park. Originally built in 1928 it has been refurbished to retain its charming atmosphere.

Meals included: Breakfast



Day 11



Fox Glacier

The mighty Fox Glacier is the largest and longest of the stunning West Coast glaciers. Remarkably, it ends in a temperate rainforest just 250 metres above sea level, only twelve kilometres from the sea. The valley at the glacier's head boasts more peaks than any other in New Zealand. Like all glaciers, the Fox Glacier advances and retreats, with its latest surge evident in the bulging lower ice fall. Alpine Guides offers access to the lower part of the glacier via a hidden track that winds through regenerating native forest, providing stunning views of the glacier's upper reaches. Fox Glacier Township, often described as the more "laid-back" of the twin Glacier Country townships, is celebrated for its relaxed atmosphere, excellent cafés, and a variety of accommodation options. The township also enjoys breathtaking views of New Zealand's tallest peaks, Mount Cook and Mount Tasman. For an unforgettable experience, take a helicopter ride to admire the glacier from above or opt for a heli hike to get up close to its icy formations. Nearby, Lake Matheson, renowned for its mirror-like reflections, is just a five-minute drive west of Fox Township. A short 25-minute drive further west takes you to historic Gillespie's Beach, famous for its crashing surf and views of distant snow-capped mountains.

SUGGESTED ACTIVITY - Half Day Lake Matheson Eco Tour

Nature has combine three ingredients to create the stunning vista that is Lake Matheson. Explore the crystal clear waters and learn about flora, fauna, glaciation, geology and natural history of this beautiful area.

You'll be collected from your accommodation in Franz Josef and driven to the stunning Lake Matheson, where you'll walk the 3km gentle track that follows the lake edge. Along the way take in the reflective qualities of the lake and the surrounding lush rainforest which make for fantastic photo opportunities.

SUGGESTED ACTIVITY - Twin Glacier Scenic Helicopter Flight with The Helicopter Line

Experience the breathtaking beauty of not one, but two spectacular glaciers—Fox Glacier and Franz Josef Glacier. Get up close to their stunning neve and intricate ice formations, with a snowfield landing that’s sure to be a highlight of your journey. Capture incredible photos, make a snowball, and create unforgettable memories during this 30-minute scenic flight with a snow landing. If weather conditions prevent your flight, your booking can be easily transferred to a similar tour with The Helicopter Line in Queenstown or Mt Cook.

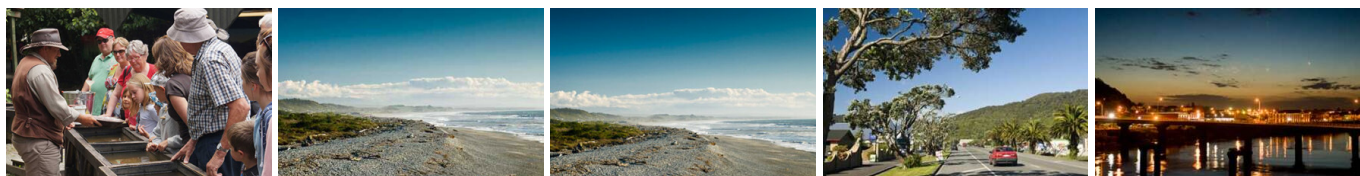
Your accommodation: Heartland Hotel Fox Glacier

The Heartland Hotel Fox Glacier is nestled at the base of the majestic Southern Alps, in the Westland World Heritage Park. Originally built in 1928 it has been refurbished to retain its charming atmosphere.

Meals included: Breakfast



Day 12



Fox Glacier to Greymouth Train Station (Return Rental Car)

The drive north from Fox and Franz Josef takes you through the historic gold mining region of Ross and the town of Hokitika, a great place to explore the craft stores, in particular the jade or greenstone. The largest town on the West Coast, Greymouth is also the starting point for the TranzAlpine Scenic Train. Drop your rental car at the Greymouth Train Station depot located inside the train station building and board the TranzAlpine train.

TranzAlpine Scenic Train: Greymouth to Christchurch

Considered one of the world's great train journeys, the TranzAlpine Scenic Train takes you from Greymouth to Christchurch. Travel across the South Island from the west to the east coast through Arthur's Pass National Park. From the comfort of your carriage see lush beech forest, deep river valleys and the spectacular peaks of the Southern Alps. Descend to the windswept Canterbury Plains before arriving in the city of Christchurch.

Shared Transfer from Christchurch Train Station to Christchurch CBD Accommodation with Christchurch Touring Company

On arrival at the Christchurch railway station, you will be met by a driver and transferred to your Christchurch accommodation.

SUGGESTED ACTIVITY - TranzAlpine Scenic Plus Addon - KiwiRail

Feel like luxurious service, exclusive meals, inclusive drinks and priority check-in and boarding? The Scenic Plus add-on option is for you. Enjoy personal service with panoramic windows, spacious carriages and comfortable seating. The exclusive open-air viewing carriage is available if you feel like capturing the ultimate photo or simply wish to experience the great outdoors whilst travelling through the Southern Alps. Your food is prepared exclusively in a kitchen carriage, with paired drinks and a paddock-to-plate regionally inspired food menu all your senses will be fully engaged on this journey.

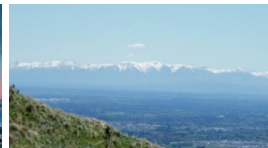
Your accommodation: Scenic Hotel Cotswold

The Scenic Hotel Cotswold is just a few minutes walk to boutique shopping at Merivale and Hagley Park. The distinctive architecture of the Scenic Hotel Cotswold reflects Christchurch's image as the most English of cities outside of England.

Meals included: Breakfast



Day 13



Private Transfer from Christchurch Accommodation to Christchurch Airport with Christchurch Touring Company

A private transfer will collect you from your accommodation and transfer you to Christchurch Airport in time for your departing flight.

Farewell from Aotearoa-New Zealand

Bid farewell to New Zealand, taking with you unforgettable memories of its breathtaking landscapes and incredible adventures. In Maori, it is said mā te wā, which is not goodbye, it is see you soon!

Tour details

Departures:	Daily
Tour type:	South Island Self Drive
Starts:	Christchurch
Finishes:	Christchurch
Tour length:	13
Accommodation:	Hotel 3 star
Car/transport type:	

Included activities

Includes	12 breakfasts
Includes	Private train station transfers
Includes	Private airport transfers
Includes	TranzAlpine Train from Greymouth to Christchurch
Includes	Real Journeys Milford Sound Cruise

Accommodation summary

Day 1	Scenic Hotel Cotswold
Day 2	Scenic Hotel Cotswold
Day 3	Hermitage Hotel Room Mount Cook View
Day 4	Dunedin Leisure Lodge – A Distinction Hotel
Day 5	Dunedin Leisure Lodge – A Distinction Hotel
Day 6	Distinction Luxmore Hotel
Day 7	Distinction Luxmore Hotel
Day 8	Copthorne Hotel & Apartments Queenstown Lakeview
Day 9	Copthorne Hotel & Apartments Queenstown Lakeview
Day 10	Heartland Hotel Fox Glacier
Day 11	Heartland Hotel Fox Glacier
Day 12	Scenic Hotel Cotswold