



Alpine Icons Tour

Discover the iconic wonders of New Zealand's South Island on this scenic self-drive tour. Explore Aoraki-Mt Cook, the turquoise alpine lakes of the breathtaking Southern Alps. Experience the tranquillity of Fiordland and the pristine beauty of Piopiotahi-Milford Sound. Enjoy endless adventures in Queenstown, and complete your journey with a visit to the spectacular West Coast Glaciers before boarding the TranzAlpine Scenic Train back to where it all began.

Starts in: Christchurch
Finishes in: Christchurch
Length: 10days / 9nights
Accommodation: Motels
Can be customised: Yes

This itinerary can be customised to suit you perfectly. We can add more days, remove days, change accommodations, mix it up, add activities to suit your interests or simply design and create something from scratch. Call us today to get your custom New Zealand itinerary underway.



Inclusions:

Includes: Late model rental cars
Includes: Fully inclusive rental car insurance (excess may apply)
Includes: Unlimited kms
Includes: Afterhours emergency support while touring
Included activity: Private Transfer Christchurch International Airport to Christchurch Accommodation
Included activity: Electronic Travel Guide and In-Country Support App
Included activity: Private Transfer from Christchurch Accommodation to Christchurch Airport with Christchurch Touring Company
Included activity: Milford Sound Cruise with Real NZ - Lunch Included
Included activity: Gondola Ride with Skyline Queenstown
Included activity: TranzAlpine Scenic Train: Greymouth to Christchurch
Included activity: Shared Transfer from Christchurch Train Station to Christchurch CBD
Accommodation with Christchurch Touring Company
1 lunch

Day 1



Private Transfer Christchurch International Airport to Christchurch Accommodation

On arrival, you will be met by a private driver and transferred to your Christchurch accommodation.

Welcome to Christchurch City

Christchurch New Zealand's garden city is steadily being transformed into a vibrant urban destination. Encompassing a large green belt, it is known for its wide tree lined avenues and lush gardens. A great way to explore the city or easy way to see the sights or ride the historic trams across town to the renowned botanic gardens and the unique cardboard Transitional Cathedral, that's right it is built of cardboard!

SUGGESTED ACTIVITY - Discover Christchurch Afternoon Tour

A half-day sightseeing tour of Christchurch highlighting both the damage to the city inflicted by several large earthquakes in 2010 and 2011 and the rebuild which is currently in progress, together with the surviving beauty of the city and the historical landmarks. Experience the grand architecture, beautiful gardens, and scenic viewpoints on a half-day city tour of Christchurch.

Your accommodation: Bella Vista Christchurch

Bella Vista Motel Christchurch offers a great range of comfortable modern units with excellent facilities. Enjoy the convenience of being located in close proximity to the Christchurch CBD, shops, entertainment and other activities.



Day 2



Collect Rental Car

Choose a car to best suit your needs from our fantastic rental car range. From compact economy, hatchbacks to prestige SUVs.

Explore Christchurch

Following earthquakes that razed its centre and much of the outlying suburbs, Ōtautahi-Christchurch is well into a billion-dollar makeover. In the middle of the Canterbury Plains, bordering the Pacific Ocean, New Zealand's newest city is an ideal gateway to exploring the middle of the South. Go punting on the Avon River, take a historic tram ride, catch the gondola to the rim of an extinct volcano or do all three! See the world's only Cardboard Cathedral and for nature enthusiasts - wander the renowned Christchurch Botanic Gardens, or head to Oxford Terrace in the city to find a great spot to eat or drink. Drive an hour in any direction to ski, mountain bike, wine taste, whale-watch, bungee jump or play golf. Take the winding Port Hills road to the French settlement of Akaroa & Banks Peninsula and tour the vines in Waipara for an authentic New Zealand wine-tasting experience.

SUGGESTED ACTIVITY - International Antarctic Centre General Admission

The International Antarctic Centre aims to recreate the atmosphere and environment of Antarctica, providing visitors with an interactive, fun, and educational experience. Feel the full Four Seasons of Antarctica, where you'll experience a custom-built snow and ice experience, then warm up in the Scott Base interior exhibit, a replica Antarctic field camp, or other informative displays in the gallery. You'll also learn about life in modern-day Antarctica, view real little blue penguins, and experience a thrilling ride in a Hagglund all-terrain vehicle.

SUGGESTED ACTIVITY - Ōtautahi City Meander with Amiki Cultural Food Tours

Discover the cultural richness of Ōtautahi Christchurch on this 75-minute guided walk. Begin with a traditional Māori welcome and hear ancestral tales of creation and connection. Stroll along laneways and the river, learning how Māori heritage is reflected in the city's rebuild. From mahinga kai traditions and stories of settlers to modern art and architecture, this tour celebrates Christchurch's diverse history and vibrant future, offering a unique way to explore the city's past and present.

Your accommodation: Bella Vista Christchurch

Bella Vista Motel Christchurch offers a great range of comfortable modern units with excellent facilities. Enjoy the convenience of being located in close proximity to the Christchurch CBD, shops, entertainment and other activities.



Day 3



Christchurch to Aoraki-Mt Cook National Park

Drive through the heart of the South Island, crossing the vast Canterbury plains. Catch your breath in Geraldine before continuing through Fairlie. Ascending Burkes pass you'll come to the picturesque town of Lake Tekapo. Follow the road and take in the view of Aoraki-Mt Cook (New Zealand's tallest mountain) from the shores of Lake Pukaki, known for its glacier fed turquoise blue colour. Continue along the lake to your final destination Aoraki-Mt Cook Village.

SUGGESTED ACTIVITY - Glacier Explorers

Experience 500-year-old icebergs up close on the Aoraki-Mt Cook terminal lake. The Glacier Explorers tour is the only one of its kind in New Zealand and one of only three in the world! Very few glaciers terminate into lakes and even fewer of them are accessible. See towering ice cliffs and floating icebergs from the safety of a specially designed boat. These boats provide a safe way to view unseen and inaccessible areas of New Zealand's largest glacier The Tasman.

Your accommodation: Mt Cook Motel

Mt Cook Motel, nestled in the heart of Mt. Cook Village, offers spacious self-contained units that provide comfort and convenience. Each unit is surrounded by breathtaking alpine mountain views, making it the perfect retreat for nature lovers and adventurers alike.



Day 4



Aoraki Mt Cook National Park to Te Anau

Twizel, just south of Aoraki-Mt Cook was the location of many Lord of the Rings movie scenes and a little further on is Omarama, the gliding capital of New Zealand. The Lindis Pass is one of New Zealand's highest roads with the summit reaching 971 metres. The tussock-covered hills offer a visual contrast as you pass from the Mackenzie Basin and into Central Otago. The first Central Otago settlement you reach is the quaint village of Tarras, which has several boutique stores and a lovely cafe. Cromwell sits at the head of the Kawarau Gorge and the historic old town is well worth the visit, the buildings are now home to quaint shops and cafes. The old town buildings were relocated from the valley that now sits deep under Lake Dunstan. Continue through the sheer cliffs of the Kawarau Gorge as they guide you towards Gibbston, one of New Zealand's premier wine-growing regions. At the famous historic Kawarau Bridge, you can take a bungy jump or sit back and enjoy the drama as visitors hurtle off the bridge. Approaching Queenstown the impressive Remarkables mountain range comes into view and then beautiful Lake Wakatipu as you head south. The lake guides you into Southland through its rich farming pastures and into Te Anau, the gateway to Fiordland National Park.

SUGGESTED ACTIVITY - Te Anau Glowworm Caves with RealNZ

Begin your Te Anau Glowworm experience with a scenic cruise across Lake Te Anau on board the luxury catamaran, Luminosa, to the western side of the lake. On arrival, you'll enter the caves through Cavern House, where informative displays detail the history of this 12,000 year old underground network. You'll then explore by limestone pathway while your guide points out hidden whirlpools, sculpted rock formations, and a rushing underground waterfall. See a magical display of thousands of glowworms as you glide through the darkness in a small boat.

Your accommodation: Lakefront Lodge

Stylish self-contained motel units less than a minute walk from Te Anau Lakefront. Enjoy a close walk to shops, cafes and restaurants.



Day 5



Te Anau to Milford Sound, returning to Te Anau

The magnificent Milford Road leading to Milford Sound offers some of the most beautiful and iconic scenery in the country. Countless photo opportunities mean this drive should not be rushed. From crystal clear lakes and towering mountains to lush glacier-formed meadows, this area is abundant with picture-perfect scenes. Continue on through the Homer Tunnel, an engineering marvel at 1219 meters long. Arriving in the village of Milford, you will be greeted with an amazing view of Mitre Peak. A day cruise into the heart of the sound is not to be missed. You'll learn about how this magnificent area was formed and experience the wonder of the falls that line the Fjord before back-tracking the way you came.

Milford Sound Cruise with Real NZ - Lunch Included

Get up close and personal with Milford Sound on a leisurely cruise of this spectacular fiord. From thundering waterfalls to sky-high mountains to lush rainforests, Milford has it all. Experience the spray of a waterfall as you cruise close to sheer rock faces. Informative, participative and relaxed, this is the perfect way to experience Milford Sound to the fullest.

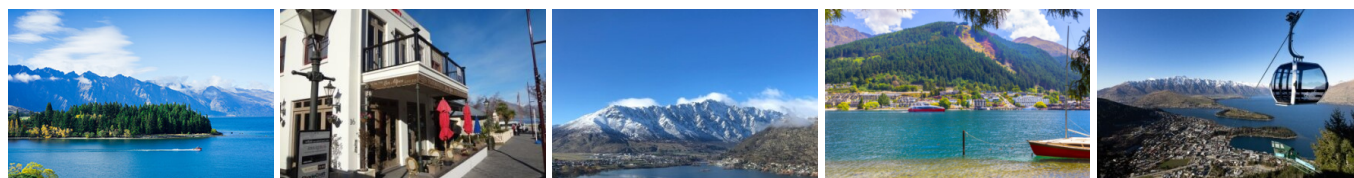
Your accommodation: Lakefront Lodge

Stylish self-contained motel units less than a minute walk from Te Anau Lakefront. Enjoy a close walk to shops, cafes and restaurants.

Meals included: Lunch



Day 6



Te Anau to Queenstown

Journey across expansive tussock lands en route to Queenstown. Pass through Mossburn, renowned as the deer capital of New Zealand, and continue through the picturesque Southland countryside. As the road begins to trace the edge of Lake Wakatipu, marvel at the breathtaking views from the Devil's Staircase. Finally, approach Queenstown, the adventure capital of New Zealand, with the Remarkables mountain range standing majestically in the backdrop.

SUGGESTED ACTIVITY - TSS Earnslaw Cruise and Walter Peak Gourmet BBQ Dinner

Enjoy a quintessential Kiwi experience, a delicious gourmet BBQ buffet meal, and a farm demonstration in a stunning lakeside setting. Take in the stunning views of Lake Wakatipu and its surroundings as you cruise across the lake to the historic Walter Peak high country farm aboard the TSS Earnslaw Steamship. Enjoy the ambiance of the heart of the stately homestead while your Colonel's Homestead Restaurant chef prepares a gourmet BBQ dinner. Your seasonal menu includes an extensive selection of local New Zealand produce, including succulent meats and a selection of delicious vegetables and salads. Complete your meal with your choice of delicious desserts, or New Zealand cheeses. After dinner, watch the farm dogs in action with a sheep-herding demonstration and say hello to the other farm animals. Finally, cruise home under the southern stars and enjoy the fresh night air as the lights of Queenstown draw ever closer.

SUGGESTED ACTIVITY - Pure Wilderness Jet Boat with Fiordland Jet

Jet boat down the Waiau river, across Lake Manapouri, to the ancient forest of the Fiordland National Park. Enjoy the thrill of jet boating down the majestic trout-filled Waiau River, to the serene Lake Manapouri. Step foot into the Fiordland National Park and go for a short walk while learning about the ancient beech forest and ferns. Your jet boat ride includes a number of stops at the exact locations of the filming the "Fellowship of the Ring" on the Waiau or "Anduin River". The driver will tell you the inside story of the filming the Lord of the Rings on this river. The trip will also include some thrilling 360 degree turns and spins as well as interesting interpretation about the flora and fauna and the local European and Māori history.

Your accommodation: Scenic Suites Queenstown

Scenic Suites Queenstown offers guests exquisite style, comfort and spectacular views over Lake Wakatipu and the Southern Alps. The hotel prides itself on its 4-star hospitality that will make your stay in Queenstown even more memorable.



Day 7



Explore Queenstown

Well-known as New Zealand's 'adventure capital', Queenstown is home to a range of adventures, from the world's first and most famous bungy jumps to jet boat thrills, white-water rafting, and skydiving. However, Queenstown offers far more than a fast-paced, action-packed holiday. Settled on the shores of beautiful Lake Wakatipu beneath a soaring panorama of the Remarkables Mountain Range, this alpine town is surrounded by many historic, gastronomic, and scenic wonders. Take a stroll through the beautiful lakefront parks and gardens, browse through market stalls on weekends, dine in wonderful al-fresco restaurants, or ride on the 100-year-old historic Steamship - TSS Earnslaw to Walter Peak Station. Take the Queenstown Gondola up to Bob's Peak and soak up the panoramic views of the magnificent lake and mountain ranges. And after all of that, if you do want the adrenaline rush, Queenstown is known for taking your pick from the Shotover Jet, Canyon Swing, Zipline, Luge, or Heli-hike.

SUGGESTED ACTIVITY - Appellation Boutique Wine Tour

Experience a tasting journey through three of Central Otago's incredibly scenic and varying wine sub-regions; Gibbston, Bannockburn and Cromwell. Visit three boutique vineyards, tasting their unique cool climate wines and discover why the Central Otago region has become world-renowned in its own right. Indulge at a fourth vineyard restaurant for a platter-style lunch, savouring the finest and freshest produce, accompanied with a wine flight.

There will also be an opportunity to retrace history when you stroll through the charming historical settlement of Old Cromwell.

SUGGESTED ACTIVITY - Lord of the Rings Glenorchy Tour with Nomad Safaris

For those keen on Lord Of The Rings this is the tour for you. Go on a scenic adventure through some of the iconic locations used in the filming. Although none of the sets are left behind, the landscapes will be instantly recognisable. Follow the shores of Lake Wakatipu to the small town of Glenorchy and enjoy the spectacular views of the Remarkables Range as you drive. From Glenorchy, you'll head into the beech forests of Paradise, located on the outskirts of Mount Aspiring National Park - before heading up the Dart Valley and back. Film locations you'll see include Isengard, Lothlorien, Ithilien Camp and the Seat of Seeing.

Queenstown Skyline Gondola Ride

Hop aboard the Skyline Gondola - the steepest cable car lift in the Southern Hemisphere! From which you can take in the awe-inspiring views of this spectacular landscape. Sit back and relax as you enjoy panoramic views of The Remarkables, Walter Peak, Cecil Peak, Coronet Peak and the magnificent Lake Wakatipu.

Your accommodation: Scenic Suites Queenstown

Scenic Suites Queenstown offers guests exquisite style, comfort and spectacular views over Lake Wakatipu and the Southern Alps. The hotel prides itself on its 4-star hospitality that will make your stay in Queenstown even more memorable.



Day 8



Queenstown to Franz Josef Glacier via Wānaka

From Queenstown you'll cross the Crown Range, the highest sealed road in New Zealand to arrive in the Alpine town of Wānaka, gateway to Mt Aspiring National Park. Skirting the shores of both Lake Wanaka and Hawea, you will enter the small town of Makarora. Stop at Blue Pools for a 1-hour return walk through the native beech forest to a glacier-fed swimming hole. Continue on through the remote seaside settlement of Haast before heading up the wild West Coast highway you pass through ancient temperate rainforests while getting sneak peeks of the wild coast beaches occasionally. Paringa Salmon Farm is worth a stop to stretch your legs, feed the fish, and stop for lunch and refreshments. Keep heading North and be sure to enjoy the view of the ever-changing towering snowcapped Southern Alps Mountain Range. Fox Glacier welcomes you first, then comes your destination for the night Franz Josef township.

SUGGESTED ACTIVITY - Twin Glacier Scenic Helicopter Flight with The Helicopter Line

A spectacular scenic flight soaring over two of New Zealand's most famous glaciers, Fox and Franz Josef. Landing at the head of one and view the incredible sight of this frozen river as it winds its way through ancient carved valleys.

Your accommodation: Bella Vista Franz Josef

From the moment you arrive at Bella Vista Franz Josef, you'll enjoy the convenience of being located in close proximity to shops, restaurants and other activities, as well as being a short walk to the Glacier Hot Pools. Franz Josef village is the perfect place to stay when exploring New Zealand's glaciers.



Day 9



Franz Josef to Greymouth Train Station

Head north along the mighty West Coast highway you pass through ancient temperate rainforests while getting sneak peeks of the wild coast beach occasionally. Whataroa is the next town where you can see one of the world's rarest birds, the Kōtuku - White Heron. The Kōtuku nest at the Waitangi Roto Nature Reserve, only accessible with a guided tour from October to March. The next town is Ross which is the site of an old gold mining settlement where the local information centre offers you the chance to pan for gold. Hokitika is a great place to explore craft and gift stores and head to the coast and take in the endless sea views. The Pounamu-Greenstone on offer in Hokitika is probably some of the best you will see in the country. Continue on to Greymouth, the largest town on the West Coast and the starting point for the next leg of your journey the TranzAlpine Scenic Train. Drop your rental car at the Greymouth Train Station depot located at the train station building before boarding your train to Christchurch.

TranzAlpine Scenic Train: Greymouth to Christchurch

Considered one of the world's great train journeys, the TranzAlpine Scenic Train takes you from Greymouth to Christchurch. Travel across the South Island from the west to the east coast through Arthur's Pass National Park. From the comfort of your carriage see lush beech forest, deep river valleys and the spectacular peaks of the Southern Alps. Descend to the windswept Canterbury Plains before arriving in the city of Christchurch.

Shared Transfer from Christchurch Train Station to Christchurch CBD Accommodation with Christchurch Touring Company

On arrival at the Christchurch railway station, you will be met by a driver and transferred to your Christchurch accommodation.

SUGGESTED ACTIVITY - TranzAlpine Scenic Plus Addon - KiwiRail

Feel like luxurious service, exclusive meals, inclusive drinks and priority check-in and boarding? The Scenic Plus add-on option is for you. Enjoy personal service with panoramic windows, spacious carriages and comfortable seating. The exclusive open-air viewing carriage is available if you feel like capturing the ultimate photo or simply wish to experience the great outdoors whilst travelling through the Southern Alps. Your food is prepared exclusively in a kitchen carriage, with paired drinks and a paddock-to-plate regionally inspired food menu all your senses will be fully engaged on this journey.

Your accommodation: Bella Vista Christchurch

Bella Vista Motel Christchurch offers a great range of comfortable modern units with excellent facilities. Enjoy the convenience of being located in close proximity to the Christchurch CBD, shops, entertainment and other activities.



Day 10



Private Transfer from Christchurch Accommodation to Christchurch Airport with Christchurch Touring Company

A private transfer will collect you from your accommodation and transfer you to Christchurch Airport in time for your departing flight.

Farewell from Aotearoa-New Zealand

Bid farewell to New Zealand, taking with you unforgettable memories of its breathtaking landscapes and incredible adventures. In Maori, it is said mā te wā, which is not goodbye, it is see you soon!

Tour details

Departures:	Daily
Tour type:	South Island Self Drive
Starts:	Christchurch
Finishes:	Christchurch
Tour length:	10
Accommodation:	Motels
Car/transport type:	

Included activities

Includes	Private train station transfers
Includes	Private airport transfers
Includes	TranzAlpine Train from Greymouth to Christchurch
Includes	Real Journeys Milford Sound Cruise

Accommodation summary

Day 1	Bella Vista Christchurch
Day 2	Bella Vista Christchurch
Day 3	Mt Cook Motel
Day 4	Lakefront Lodge
Day 5	Lakefront Lodge
Day 6	Scenic Suites Queenstown
Day 7	Scenic Suites Queenstown
Day 8	Bella Vista Franz Josef
Day 9	Bella Vista Christchurch