



## Southern Coast to Coast Tour

A fabulous exploration of New Zealand's lower South Island, take in all that makes this region such a spectacular vacation destination. Depart Christchurch and head towards the Southern Alps and the infamous Aoraki - Mt Cook National Park. Follow the Waitai Hydro System back to the ocean as you go to Dunedin and the wildlife of the Otago Peninsula. Cross through the farms of Southland as you head to Te Anau and Fiordland National Park where you will embark on the epic adventure that is the Fiordland Navigator, and overnight cruise through the ancient fiords of Doubtful Sound. Next up is the Adventure Capital Queenstown before making your way through Wanaka to the West Coast Glaciers and finding yourself back where you started in the Garden City - Christchurch.

Starts in: Christchurch  
Finishes in: Christchurch  
Length: 14days / 13nights  
Accommodation: Boutique Lodges & Hotels  
Can be customised: Yes

This itinerary can be customised to suit you perfectly. We can add more days, remove days, change accommodations, mix it up, add activities to suit your interests or simply design and create something from scratch. Call us today to get your custom New Zealand itinerary underway.



### Inclusions:

Includes: Late model rental cars

Includes: Unlimited kms

Included activity: Electronic Travel Guide and In-Country Support App

Included activity: Half Day Gibbston Wine Tour with Black NZ

Included activity: Franz Josef Glacier Helihike with Franz Josef Glacier Guides

Included activity: Private Transfer Christchurch Train Station to Accommodation

Included activity: Private transfer accommodation to airport to collect rental car

Included activity: Big Sky Stargazing

Included activity: Wildlife Peninsula Encounter Tour and Wildlife Cruise with Monarch

Included activity: Doubtful Sound Fiordland Navigator Overnight Cruise

plus much more...

Includes: Fully inclusive rental car insurance (excess may apply)

Includes: Afterhours emergency support while touring

Included activity: Private Transfer Christchurch International Airport to Christchurch Accommodation

Included activity: One Hour Private Tub with Waiho Hot Tubs

Included activity: TransAlpine Scenic Train: Greymouth to Christchurch Scenic Plus with Great Journeys NZ

Included activity: Private Transfer from Christchurch Accommodation to Christchurch Airport with Christchurch Touring Company

Included activity: Akaroa Harbour Nature Cruise with Black Cat

Included activity: Dinner at Camp Estate, Larnach Castle

Included activity: Dinner at Camp Estate, Larnach Castle

Included activity: Gondola and Premium Buffet Dinner Experience with Skyline Queenstown

## Day 1



### Private Transfer Christchurch International Airport to Christchurch Accommodation

On arrival, you will be met by a private driver and transferred to your Christchurch accommodation.

### Welcome to Christchurch City

Christchurch New Zealand's garden city is steadily being transformed into a vibrant urban destination. Encompassing a large green belt, it is known for its wide tree lined avenues and lush gardens. A great way to explore the city or easy way to see the sights or ride the historic trams across town to the renowned botanic gardens and the unique cardboard Transitional Cathedral, that's right it is built of cardboard!

### Your accommodation: The George Hotel

The George is the essence of supreme comfort. The award-winning 5 star hotel is opposite Hagley Park and just a few minutes stroll from the Botanic Gardens. It also has an award-winning restaurant, 50 Bistro onsite.



## Day 2



### Private transfer accommodation to airport to collect rental car

A private transfer will meet you at your accommodation and transfer you to Christchurch Airport to collect your rental car.

### Collect Rental Car

This tour's from price includes an intermediate-sized vehicle, setting you up for comfortable travels. Yet, we understand every adventure is unique! Feel free to select the perfect wheels from our incredible collection of rental cars, spanning from economy hatchbacks to premium SUVs.

### Christchurch to Akaroa

The Banks Peninsula offers a great contrast to the South Island's largest city. Just around a 1 1/2 hours drive from the city centre are rolling green hills, streams, golden sand beaches and small settlements that offer a unique insight into New Zealand's history and development. Just on the other side of the Port Hills is Lyttelton, a busy port town that was crucial to the development of Christchurch and the Canterbury Plains. Following the road around the beautiful natural harbour the names, such as Magazine Bay, Battery Point, Corsair Point and Governors Bay, remind of the importance the navy placed on this harbour.

The Banks Peninsula itself is actually the remains of a long extinct volcano, the rim of which collapsed some time ago allowing the sea to flood into and create what is now the Akaroa Harbour. In 1840 French colonists settled in Akaroa in a bid to stake a claim for the South Island. Unbeknown the British had already declared sovereignty and a long drawn out dispute ensued with the British eventually being given government. However the French stayed and made this stunning part of the South Pacific their home and still to this day the town boasts French street names and every year a French Festival is held.

The Harbour itself is teeming with wildlife and a nature cruise is a must do activity. One of the world's smallest and rarest dolphins, hectors dolphin, are often seen and cruises also offer excursions with the chance to swim amongst them.



## Akaroa & the Banks Peninsula

The Banks Peninsula lies just around 1 hour from Christchurch city centre. Formed by ancient volcanic eruptions the regions first settlers were Maori who recognised its potential for shelter and food. The sealers and whalers followed them and European colonists founded and settled Akaroa, Little River and Lyttelton and many of the Peninsula's other bays. Abounding with wildlife and history it's a great place to spend the day exploring.

The jewel is Akaroa which lies just over 70 kilometres from central Christchurch and the drive to this picturesque harbour town is a wonderful experience in itself as it can either take you via the port of Lyttelton and along the bays or over the Summit Road of the Port Hills.

The well-signposted tourist routes will guide you on a loop around the peninsula and through some spectacular and rugged farmland scenery.

As you approach the small settlement of Duvauchelle you are greeted by New Zealand's oldest hotel.

The town of Akaroa has rather a French feel with many flags flying and cottages and streets with distinctly non-kiwi names. The reason being that 63 Frenchmen arrived here to settle the Banks Peninsula under the French Flag only to find the British had beaten them by 5 days. Their influence on architecture combined with a Victorian seaside feel make the town a delightful place to spend an afternoon. There are many activities such as nature cruises and swimming with dolphins.

---

### Your accommodation: Beaufort House Akaroa

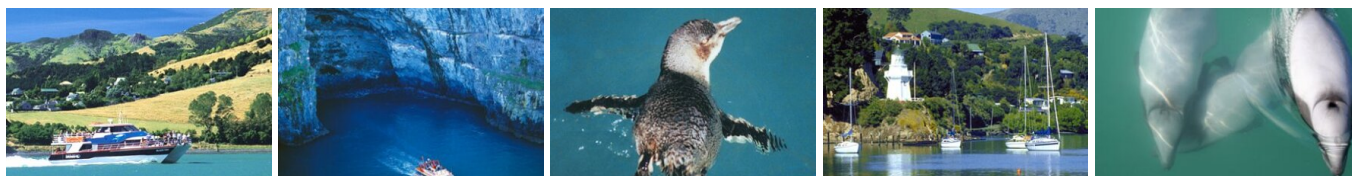
This beautiful historic home and garden has been lovingly restored with old world charm and modern conveniences offering quality accommodation. Relax on the verandahs or wander around the gracious traditional garden containing protected trees, rare camellias, roses and a small private vineyard. Secluded and private it is just a short stroll to the village and harbour.

Meals included: Breakfast



---

## Day 3



### Akaroa Harbour Nature Cruise with Black Cat

Experience majestic scenery and stunning wildlife daily on a Black Cat Akaroa Harbour Nature Cruise. You'll see the rare, native dolphin – the Hector's or New Zealand Dolphin. There's also the chance to spot the world's smallest penguin, the White Flipped Little Blue Penguin, Fur Seals and other sea birds.

Other cruise highlights are some majestic volcanic cliffs (including the impressive Cathedral Cave) and signs of Akaroa's fascinating past including early Maori, French and British settlements.

---

### Your accommodation: Beaufort House Akaroa

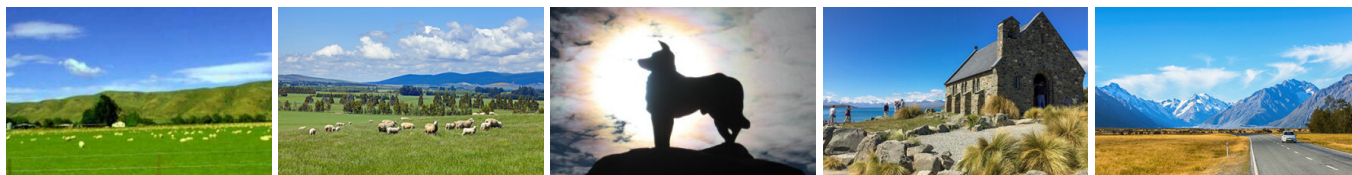
This beautiful historic home and garden has been lovingly restored with old world charm and modern conveniences offering quality accommodation. Relax on the verandahs or wander around the gracious traditional garden containing protected trees, rare camellias, roses and a small private vineyard. Secluded and private it is just a short stroll to the village and harbour.

Meals included: Breakfast



---

## Day 4



## Akaroa to Aoraki Mt Cook National Park

Today you head into the heart of the South Island. Crossing the vast Canterbury Plains along the inland scenic route the first township of Geraldine offers an ideal refreshment stop before you head into Mackenzie country.

Passing through places such as Beautiful Valley it's not hard to understand where the names originate. Ascending Burkes Pass and onto the high country plateau and the picturesque town of Lake Tekapo, the first of the large Southern Lakes. It's a great place to take a scenic flight, enjoy a guided horse trek, a boat trip on the pristine lake, or just enjoy the magnificent views.

Lake Pukaki is just another 30 minutes from Lake Tekapo and from here you can be rewarded with spectacular views of the full length of the lake and into Aoraki Mt Cook National Park. In Mt Cook Village a myriad of activities are available from glacier landings by ski plane or helicopter, kayaking on a glacial lake and a host of walks to suit all abilities and time frames. At The Hermitage Hotel, the Sir Edmund Hillary Alpine Centre is a must-see.

---

## Walking Track in Aoraki-Mt Cook National Park

Aoraki-Mt Cook Village offers a variety of short scenic walks suitable for all ages and fitness levels. Start your adventure at the Department of Conservation Information Centre, where you can learn about track conditions, local history, and the area's wildlife. Here are a few popular walks to explore: Bowen Bush Walk: 10-minute return Glencoe Walk: 10-minute return Red Tarns Track: 2-hour return Kea Point Walk: 2-hour return Sealy Tarns Track: 3 - 4 hours return

---

## Big Sky Stargazing

Mt Cook is far from the city lights and therefore has some of the darkest skies in New Zealand, perfect for viewing the night sky! Their fully trained guides are delighted to show you the beautiful southern night sky using the naked eye, state-of-the-art astronomy telescopes, and binoculars at the outdoor viewing platform. If the weather is not favourable, then there will be an indoor alternative featuring New Zealand's first full-dome digital Planetarium, high-definition video images on a suspended 9m wide x 4.5m high full dome. Unleash your imagination as you discover the night sky, including the Southern Cross, seasonal ecliptic objects, planets, star clusters, moons, distant galaxies, and even our very own galaxy, the spectacular Milky Way!

---

## Your accommodation: Hermitage Hotel, Aoraki Wing Premium

The Hermitage Hotel ringed by magnificent snow-capped peaks of the Southern Alps, is a world-renowned tourist destination and has been an icon of superior accommodation and dining since 1884.

Meals included: Breakfast



## Day 5



## Aoraki Mt Cook National Park to Dunedin

Leave Aoraki Mt Cook National Park and travel past Twizel, one of the locations for the Lord of the Rings films. Go through Omarama, the gliding capital of New Zealand. Continue down the Waitaki Valley follow the hydro power generating system towards the east coast. Stretch your legs in Oamaru, known for its white stone buildings constructed with the local Oamaru Stone and Steampunk influence. If you were a little late off the mark this morning you may get the chance to see the blue penguins come ashore at dusk. Continue south down the coast to Moeraki, and take a detour towards the beach to see the Moeraki Boulders, a unique geological feature well worth a look. As you arrive in Dunedin, take in the city's Edwardian and Scottish heritage reflected in the buildings around the city centre The Octagon.

---

## Dinner at Camp Estate, Larnach Castle

Keeping with the historical setting of Larnach Castle, a four-course dinner is offered in a grand Castle Dining Room. This is a trust-the-chef experience where you may indulge in incredible meals and meet other guests. The menu reflects local meats and vegetables, served in a traditional New Zealand-style cuisine with the opportunity to pair with regional wines.

---

## Your accommodation: Camp Estate at Larnach Castle

A luxurious country house built from blue stone and features a spectacular marble staircase. The modern rooms are all double glazed and the reception rooms are all heated by open fires and underfloor heating. Staying at Camp Estate includes entry to Larnach Castle and the grounds.

Meals included: Breakfast, Speciality Dinner



## Day 6



### Explore Dunedin and the Otago Peninsula

Known as the Edinburgh of the South, Dunedin City has a heavy Scottish influence. Surrounded by rugged coastal plains and windswept beaches it's home to an eclectic mix of historical and modern architecture as well as industrial technology. Renowned for its Flemish Baroque-inspired 'gingerbread house' Railway Station, this university town is bustling with life. Head to the Saturday farmers market held in the aforementioned railway grounds for a taste of organic produce, handmade crepes and local honey. Explore the many cafes and wine bars in The Octagon, then continue on a self-guided walking tour of the internationally acclaimed Street Art dotted around the city. Drive to the coast and watch the freighters passing in the distance while you sunbathe, or hire a mountain bike and test your legs on one of the many trails available in the area. For a more immersive historical experience, follow the coast to New Zealand's only castle, Larnach Castle. On your way back be sure to head to the Otago Peninsula to see the largest mainland Albatross colony in the world.

### Wildlife Peninsula Encounter Tour and Wildlife Cruise with Monarch

Join a small-group bus tour led by a local guide across the Otago Peninsula, featuring stunning harbour views, rural landscapes, and unique wildlife. Visit a remote beach to spot sea lions, take a Monarch Wildlife Cruise to see albatross, seals, and rare seabirds, and explore a Yellow-eyed Penguin conservation reserve with hidden viewing hides. This unforgettable journey blends breathtaking scenery with intimate wildlife encounters before a relaxed return to Dunedin.

### Dinner at Camp Estate, Larnach Castle

Keeping with the historical setting of Larnach Castle, a four-course dinner is offered in a grand Castle Dining Room. This is a trust-the-chef experience where you may indulge in incredible meals and meet other guests. The menu reflects local meats and vegetables, served in a traditional New Zealand-style cuisine with the opportunity to pair with regional wines.

### Your accommodation: Camp Estate at Larnach Castle

A luxurious country house built from blue stone and features a spectacular marble staircase. The modern rooms are all double glazed and the reception rooms are all heated by open fires and underfloor heating. Staying at Camp Estate includes entry to Larnach Castle and the grounds.

Meals included: Breakfast, Speciality Dinner



## Day 7



### Dunedin to Te Anau (via Invercargill)

The drive to Te Anau takes you through classic Southland farming scenery. Head off-the-beaten-track today and follow the coastline instead of the inland route. Go through The Catlins area and be sure to take a detour to Kaka Point to view its majestic cliffs and pounding surf. If time permits, keep driving towards Nugget Point, iconic for its steep headland with a lighthouse perched atop. Continue through Invercargill to Riverton and Colac Bay, and then head north to Manapouri. From here you can embark on a day or overnight cruise to the remote Doubtful Sound, renowned for its natural beauty. Just a short way further will bring you to your lakeside destination of Te Anau, gateway to Fiordland National Park and Milford Sound.

### Te Anau

It is the gateway to Fiordland National Park and a perfect base to visit Piopiotahi-Milford Sound. The Milford Road originates here, and this is arguably one of the most scenic stretches of highway in the country. Te Anau sits on the shores of spectacular Lake Te Anau, which reaches depths of 417 meters. Te Anau Township is the starting point for many walking tracks, including two of New Zealand's Great Walks, the Milford track and the Kepler track. Apart from hiking, you could go kayaking, lake cruising, fishing, or exploring Te Anau Glowworm Caves. You could go for a bike ride alongside the lake towards Lake Manapouri, on a popular Lake to Lake biking route. Along the way, you will pass a bird sanctuary specialising in Takahe, and other native birds.



## Your accommodation: Fiordland Lodge

Set in a World Heritage area Fiordland Lodge offers the discerning traveller comfort and privacy. The elegance and splendour of the Lodge is mirrored in the breathtaking views of Lake Te Anau and Fiordland. Private and serene, the Lodge is perfect for relaxation, or as a base for your Fiordland experience.

Meals included: Breakfast, Dinner



---

## Day 8



### Te Anau to Manapouri

This short drive takes you along the lake edge of Te Anau and across lush southern farmlands to the small township of Lake Manapouri, gateway to Doubtful Sound.

---

## Doubtful Sound Fiordland Navigator Overnight Cruise

Take in the tranquility of remote Doubtful Sound on this unique overnight wilderness cruise. Beginning in Manapouri with a short boat ride across the lake, you'll be taken by coach over the Wilmot Pass to Deep Cove, Doubtful Sound. Board the Fiordland Navigator, a purpose-built vessel designed like a traditional coastal trading scow. Be accommodated in a private cabin with an ensuite bathroom or a quad-share bunk room with shared bathroom facilities. The Navigator has a large spacious deck for viewing the scenery and wildlife as well as a dining saloon, bar and observation lounge. As you take in the stunning scenery of the Fiord, you'll be provided with a running commentary of the area and its history, points of interest and wildlife. You'll have the opportunity to see dolphins, fur seals and, if you're lucky rare Fiordland penguins. After anchoring in a sheltered cove, choose to explore the shoreline by kayak or stabcraft, or if you're really brave take a dip in the water. In the evening enjoy a three-course buffet dinner prepared on board and served in the dining saloon. Enjoy beer and fine wines from the licensed bar, and spend time star gazing on the upper deck. Following hearty cooked breakfast the next morning you will spend your remaining time exploring other parts of the fiord before returning to Deep Cove for the trip back to Manapouri.

---

## Your accommodation: Fiordland Navigator Overnight Boat in Doubtful Sound

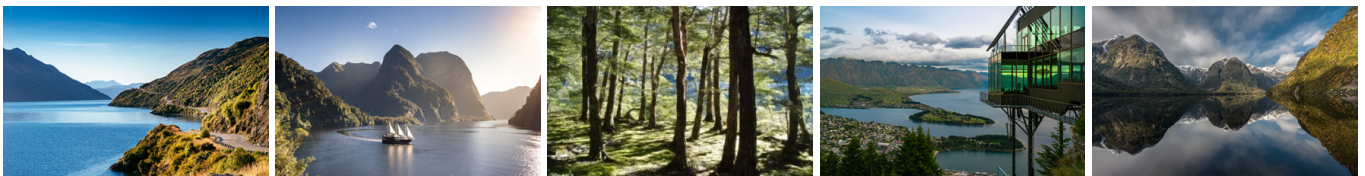
The Fiordland Navigator is purpose built for cruising in the fiords. The vessel offers spacious viewing decks, a comfortable dining saloon and observation lounge.

Meals included: Breakfast, Dinner



---

## Day 9



### Manapouri to Queenstown

Your Doubtful Sound Overnight Cruise returns to Manapouri at midday.

Crossing the rolling tussock lands, pass through Mossburn, the deer capital of New Zealand. Continue north through lush Southland countryside towards Lake Wakatipu. The road now hugs the lake edge and the Remarkable mountain range towers over your approach to Queenstown, the adventure capital of New Zealand.

## Queenstown

Queenstown known in Māori as Tāhuna, is home to many adrenaline-inducing activities. Nestled on the shores of Lake Wakatipu, this alpine town has very distinct seasons, and most adrenaline-filled activities can be accessed year-round. Queenstown is home to jet boating, bungy jumping, rafting, skydiving, paragliding, and even indoor thrills. If you want that rush - head out on the Shotover Jet, dive off the Nevis Bungy, freefall on the Canyon Swing, or Zip line the Gondola. While arguably the brightest gem in New Zealand's crown, Queenstown offers far more than an action-packed getaway. If you're looking for a slightly slower pace, there are plenty of recreational activities, including hiking and biking trails to explore, guided tours, boat cruises, scenic flights, or spa and wellness options to help you get away. Head to the lakefront, eat at one of the al fresco eateries, and soak up the local vibes; catch a ride on the iconic 100-year-old steamship the TSS Earnslaw; or take the Skyline Gondola and enjoy bird's-eye views of the Remarkables mountain ranges and Lake Wakatipu. Pack a picnic and go for a hike, only 20 minutes from Central Queenstown, Coronet Peak opens for summer sightseeing. You can ride the Peak Gondola to the top for panoramic views and hike the trails, or go for a bike ride on many excellent biking trails. In winter, Queenstown becomes a world-class winter resort, with four ski areas and a range of activities, bars, restaurants, and ways to relax and unwind.&nbsp;

---

### Skyline Gondola Queenstown and Premium Buffet Dinner Experience

With breathtaking views across Queenstown and Lake Wakatipu, the Skyline Complex is a must-do. Catch the fully enclosed gondola to the summit for a remarkable panorama of the city surrounds. Wander the outdoor viewing decks then enjoy a gourmet buffet meal in the Stratosphere Restaurant.

---

### Your accommodation: Queenstown Park Boutique Hotel

Queenstown Park Hotel is a boutique hotel with a modern romantic style in the heart of New Zealand's adventure capital. Set in peaceful parkland, savour views of Queenstown's majestic mountains. Enjoy easy access to the vibrant town centre where shopping, cafes and nightlife nestled on the shores of spectacular Lake Wakatipu.

Meals included:            Breakfast



---

## Day 10



### Explore Queenstown

Well-known as New Zealand's 'adventure capital', Queenstown is home to a range of adventures, from the world's first and most famous bungy jumps to jet boat thrills, white-water rafting, and skydiving. However, Queenstown offers far more than a fast-paced, action-packed holiday. Settled on the shores of beautiful Lake Wakatipu beneath a soaring panorama of the Remarkables Mountain Range, this alpine town is surrounded by many historic, gastronomic, and scenic wonders. Take a stroll through the beautiful lakefront parks and gardens, browse through market stalls on weekends, dine in wonderful al-fresco restaurants, or ride on the 100-year-old historic Steamship - TSS Earnslaw to Walter Peak Station. Take the Queenstown Gondola up to Bob's Peak and soak up the panoramic views of the magnificent lake and mountain ranges. And after all of that, if you do want the adrenaline rush, Queenstown is known for taking your pick from the Shotover Jet, Canyon Swing, Zipline, Luge, or Heli-hike.

---

### Half Day Gibbston Wine Tour with Black NZ

Enjoy wine tastings at 4 or more vineyards in the Gibbston region with an informative and entertaining commentary about the gold mining history and pioneers of the wine industry. Can be combined with a visit to the famous A.J.Hackett Kawarau Bungy Bridge for a leap of faith.

---

### Your accommodation: Queenstown Park Boutique Hotel

Queenstown Park Hotel is a boutique hotel with a modern romantic style in the heart of New Zealand's adventure capital. Set in peaceful parkland, savour views of Queenstown's majestic mountains. Enjoy easy access to the vibrant town centre where shopping, cafes and nightlife nestled on the shores of spectacular Lake Wakatipu.

Meals included:            Breakfast



## Day 11



### Queenstown to Franz Josef Glacier via Wānaka

From Queenstown you'll cross the Crown Range, the highest sealed road in New Zealand to arrive in the Alpine town of Wānaka, gateway to Mt Aspiring National Park. Skirting the shores of both Lake Wanaka and Hawea, you will enter the small town of Makarora. Stop at Blue Pools for a 1-hour return walk through the native beech forest to a glacier-fed swimming hole. Continue on through the remote seaside settlement of Haast before heading up the wild West Coast highway you pass through ancient temperate rainforests while getting sneak peeks of the wild coast beaches occasionally. Paringa Salmon Farm is worth a stop to stretch your legs, feed the fish, and stop for lunch and refreshments. Keep heading North and be sure to enjoy the view of the ever-changing towering snowcapped Southern Alps Mountain Range. Fox Glacier welcomes you first, then comes your destination for the night Franz Josef township.

### One Hour Private Tub with Waiho Hot Tubs

Relax and unwind in the soothing comfort of fresh, warm water and aromatic wood smoke. Enjoy your own private tubs, nestled in a lush rainforest setting on New Zealand's West Coast. These wood-fired hot tubs combine the soothing comfort of warm water with the unique atmosphere of wood smoke to give you an unforgettable experience.

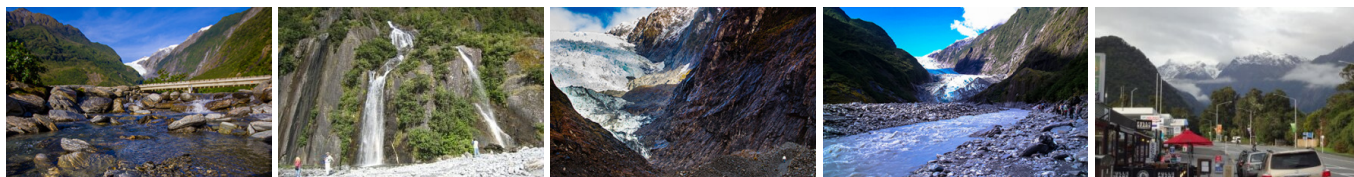
### Your accommodation: Westwood Lodge

Westwood is a purpose built lodge, crafted entirely from wood and exquisitely decorated throughout. The lounge is the place to meet to watch the Southern Alps turn a soft pink in the setting sun.

Meals included: Breakfast



## Day 12



### Explore Franz Josef

Franz Josef is a small yet lively town in the heart of New Zealand's West Coast, best known for its spectacular 12 km-long glacier. The township is surrounded by lush, rainforest-clad mountains and has a vibrant atmosphere with plenty to explore. A variety of scenic walking trails offer incredible views of the glacier, but for a truly up-close experience, a licensed helicopter tour is the only way to set foot on the ice. Beyond the glacier, unwind in the rejuvenating Hot Pools or visit the West Coast Wildlife Centre to spot rare kiwi birds. If you're in the mood for a more relaxed day, the township is home to charming souvenir and gift shops, as well as great dining spots like SnakeBite Brewery and King Tiger. Whether you're chasing adventure or relaxation, Franz Josef is a stunning blend of wild beauty and welcoming hospitality.

### Franz Josef Glacier Helihike with Franz Josef Glacier Guides

After a thrilling scenic flight, high above the rugged terrain, you will land on the glacier, ready to undertake a guided glacier hike. Your friendly guide will lead you through some of the most pristine and awe-inspiring glacial scenery in the world. Your guide will choose your route carefully as you go and, with an eye for the most spectacular ice formations, you'll soon be making your way through an extraordinary landscape of towering peaks and glistening blue ice. It is important you read and understand the risks associated with this activity prior to travel. For more information please see [here](#).

### Your accommodation: Westwood Lodge

Westwood is a purpose built lodge, crafted entirely from wood and exquisitely decorated throughout. The lounge is the place to meet to watch the Southern Alps turn a soft pink in the setting sun.

Meals included: Breakfast





## Day 13



### Franz Josef to Greymouth Train Station

Head north along the mighty West Coast highway you pass through ancient temperate rainforests while getting sneak peeks of the wild coast beach occasionally. Whataroa is the next town where you can see one of the world's rarest birds, the Kōtuku - White Heron. The Kōtuku nest at the Waitangi Roto Nature Reserve, only accessible with a guided tour from October to March. The next town is Ross which is the site of an old gold mining settlement where the local information centre offers you the chance to pan for gold. Hokitika is a great place to explore craft and gift stores and head to the coast and take in the endless sea views. The Pounamu-Greenstone on offer in Hokitika is probably some of the best you will see in the country. Continue on to Greymouth, the largest town on the West Coast and the starting point for the next leg of your journey the TranzAlpine Scenic Train. Drop your rental car at the Greymouth Train Station depot located at the train station building before boarding your train to Christchurch.

---

### Return your rental car

Return your rental vehicle to your designated depot before your next adventure.

---

### TranzAlpine Scenic Train: Greymouth to Christchurch Scenic Plus with Great Journeys NZ

Great Journeys New Zealand's Scenic Plus carriage provides comfort and vast panoramic views, making our TranzAlpine scenic train journey the perfect way to explore coast-to-coast through the 'Great Divide' and the indomitable spine of mountains that partitions New Zealand's South Island. Scenic Plus offers an all-inclusive experience on the unique TranzAlpine scenic rail journey to invigorate all the senses! Feast your eyes on epic scenery while you savour regionally inspired cuisine paired with sumptuous wine and beer all from the comfort of your luxurious seat &ndash; a hosted dining experience like no other. Quite simply, we have done everything we can to ensure you feel at peace as you sink back in your seat and soak up the scenery.

---

### Private Transfer Christchurch Train Station to Accommodation

On arrival at the Christchurch train station, you will be met by a private driver and transferred to your accommodation.

---

### Your accommodation: The George Hotel

The George is the essence of supreme comfort. The award-winning 5 star hotel is opposite Hagley Park and just a few minutes stroll from the Botanic Gardens. It also has an award-winning restaurant, 50 Bistro onsite.

Meals included:            Breakfast



## Day 14



### Private Transfer from Christchurch Accommodation to Christchurch Airport with Christchurch Touring Company

A private transfer will collect you from your accommodation and transfer you to Christchurch Airport in time for your departing flight.

---

### Farewell from Aotearoa-New Zealand

Bid farewell to New Zealand, taking with you unforgettable memories of its breathtaking landscapes and incredible adventures. In Maori, it is said mā te wā, which is not goodbye, it is see you soon!

---

## Tour details

Departures:	Daily
Tour type:	Self Drive Tour (FTNZ ONLY)
Starts:	Christchurch
Finishes:	Christchurch
Tour length:	14
Accommodation:	Boutique Lodges & Hotels
Car/transport type:	

---

## Included activities

Includes	3 dinners
Includes	All breakfasts
Includes	Private train station transfers
Includes	Private airport transfers
Includes	TranzAlpine Train from Greymouth to Christchurch
Includes	Akaroa Harbour Nature Cruise
Includes	Wildlife cruise and Yellow eyed penguin colony, Dunedin
Includes	Doubtful Sound Overnight Cruise

---

## Accommodation summary

Day 1	The George Hotel
Day 2	Beaufort House Akaroa
Day 3	Beaufort House Akaroa
Day 4	Hermitage Hotel, Aoraki Wing Premium
Day 5	Camp Estate at Larnach Castle
Day 6	Camp Estate at Larnach Castle
Day 7	Fiordland Lodge
Day 8	Fiordland Navigator Overnight Boat in Doubtful Sound
Day 9	Queenstown Park Boutique Hotel
Day 10	Queenstown Park Boutique Hotel
Day 11	Westwood Lodge
Day 12	Westwood Lodge
Day 13	The George Hotel