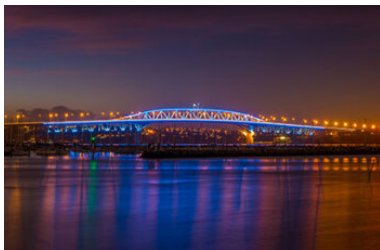
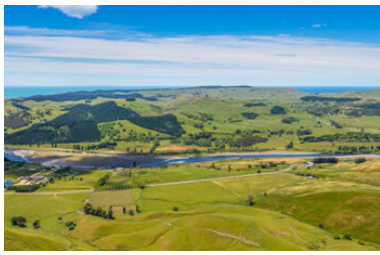


## 30 day North to South Ultimate Adventure



Travel the length of New Zealand in unique and exclusive style, staying at exquisite hotels and lodges along the way.

Sail the Waitemata Harbour in Auckland, take a scenic flying tour of Cape Reinga in Northland and a helicopter ride to volcanic Mt Tarawera from Rotorua. In the South Island we take you to hidden gems, where you're surrounded by nature and in Fiordland you spend a night in Doubtful Sound, possibly the most peaceful location in the world. Adventure also awaits you with kayaking, glacier walks and a thrilling jet boat ride into Mt Aspiring National Park all included for your New Zealand adventure.

Starts in: Auckland  
Finishes in: Christchurch  
Length: 30days / 29nights  
Accommodation: Boutique Lodges & Hotels  
Can be customised: Yes

This itinerary can be customised to suit you perfectly. We can add more days, remove days, change accommodations, mix it up, add activities to suit your interests or simply design and create something from scratch. Call us today to get your custom New Zealand itinerary underway.



### Inclusions:

Includes: Late model rental cars

Includes: Unlimited kms

Includes: Airport & ferry terminal rental car fees

Includes: Comprehensive tour pack (detailed itinerary, driving instructions, map/guidebooks, brochures)

Included activity: Electronic Travel Guide and In-Country Support App

Included activity: Zealandia By Night Wildlife Sanctuary Tour

Included activity: Beaches, Bays and Seals Guided Sea Kayaking Trip Including Picnic Lunch

Included activity: Christchurch Gondola

Included activity: Glacier Explorers

Included activity: Wildlife Peninsula Encounter Tour Including Wildlife Cruise with Monarch

Included activity: Doubtful Sound Fiordland Navigator Overnight Cruise

plus much more...

Includes: Fully inclusive rental car insurance (excess may apply)

Includes: GPS navigation

Includes: Additional drivers

Includes: 24/7 support while touring New Zealand

Included activity: Private Transfer Auckland Airport to Auckland accommodation with Tourcorp

Included activity: Interislander Ferry Wellington to Picton

Included activity: Ocean's Cabin with Whale Watch Kaikoura

Included activity: America's Cup Sailing Experience with Explore

Included activity: Dinner at Camp Estate, Larnach Castle

Included activity: Dinner at Camp Estate, Larnach Castle

Included activity: Dart River Wilderness Jet

## Day 1



### Private Transfer Auckland Airport to Auckland Accommodation

You will be met at the Auckland airport by the driver and transferred to your Auckland accommodation.

---

### Welcome to Auckland

Auckland, New Zealand's self-proclaimed "City of Sails" is the country's largest metro area. Resting between the Pacific Ocean and the Tasman Sea, this urban paradise has something for everyone. Surrounded by native bush, rainforests, and an abundance of beaches, Auckland is a playground for both the city savvy and those with an eye for adventure. Explore the central museums and galleries on foot, or get out onto the water to experience the best views of the city.

---

### SUGGESTED ACTIVITY - All Blacks Experience

See what it takes to make, shape and be an All Black. Experience first-hand the excitement and emotion of game day. Discover the stories behind some of world rugby's most famous players, moments and matches.

This guided experience introduces you to the game of rugby before being lead through state-of-the-art displays combining sound, images, interactive technology and hands-on activities. Discover New Zealand's deep passion for our national sport, experience the full force of the All Blacks haka, tackle interactive zones where you can try out your kicking, catching, line-out and accuracy skills against legendary All Blacks.

---

### SUGGESTED ACTIVITY - Wētā Workshop Unleashed

Explore worlds of horror, sci-fi and fantasy in the making. An exciting, realistic, and authentic experience, with three fully developed and original film concepts: A nail-biting horror Fauna, a fantasy epic Age of the Ever-Clan, and the mind-bending sci-fi Origins.

A 90-minute guided experience through fully themed environments, including immersive horror, fantasy, and sci-fi story worlds. Be immersed by a specially-created unique sweeping cinematic soundtrack, animatronic creatures, physical and digital interactives, hyper-realistic sculpted giants and characters, a horror house experience, and much more.

---

### Your accommodation: Fable Auckland

Located right on Queen Street the Fable Auckland is boutique and stylish property with an ideal location to enjoy and explore the vibrant heart of the 'City of Sails'.



## Day 2



### Explore Auckland City

Perched on the edge of a large natural harbour, New Zealand's 'City of Sails' offers the best of both worlds. Sandy beaches, native bush and lush rainforests give way to a vibrant urban culture, humming with life. Spend time in the Viaduct Harbour, try your hand at sailing an America's Cup yacht or take the ferry to nearby Waiheke Island for a gourmet food and wine experience.

If you're looking for a lovely hike, walk (if you're that way inclined) to the top of Auckland's highest volcano, Mt Eden, and take in soaring views of the gulf. Immerse yourself in nature's beauty at the expansive Auckland Botanic Gardens, sprawled across 156 acres of lush land and native forest on Hill Road. Pack a picnic, soak up the sunshine, and delight in the melodious birdsong during a peaceful lunch. Head up the Sky Tower, standing at just over 300m tall (about 1,000 feet) and have a meal in the 360 degree revolving restaurant. Scale the outermost perimeter of the Harbour Bridge or test your stomach and bungee off both. To end your day, catch a cab to Ponsonby Road and sample some upmarket culinary delights.

---

## America's Cup Sailing Experience with Explore

Participate as crew on an authentic America's Cup yacht. Take the helm, exert energy on the grinders or sit back and enjoy the action and scenery as you sail the beautiful Waitemata Harbour. Experience the excitement of sailing, no experience necessary. Feel the thrill of the wind in your face as you tack and jibe. These powerful and highly engineered race vessels are usually the domain of billionaires and elite professional yachties but this unique two-hour sailing experience offers everyone the opportunity to sail these Grand Prix racing machines. America's Cup is the world's oldest and most prestigious sporting trophy and ultimate yachting regatta. Experience it first hand sailing these remarkable vessels on the harbour that hosted the America's Cup in 2000 and 2003.

---

### Your accommodation: Fable Auckland

Located right on Queen Street the Fable Auckland is boutique and stylish property with an ideal location to enjoy and explore the vibrant heart of the 'City of Sails'.

Meals included: Breakfast



---

## Day 3



### Collect your rental car

This tour can be priced with any of the rental cars available in our fantastic range, from economy hatchbacks to prestige saloons and SUV's.

---

### Auckland to Paihia, Bay of Islands

The trip from Auckland to the Bay Of Islands takes around 3.5 hours but give yourself some leeway for stops and sightseeing. As you go through Puhoi, take in the bohemian atmosphere of this historical township. Stop for a breath of fresh salty air in Whangarei and take another break at Kawakawa, home to the world famous Hundertwasser toilets. Enjoy the native bush surrounds and marvel at the endless golden beaches as you arrive into central Bay Of The Islands, Paihia.

---

### Your accommodation: Arcadia Lodge, Russell

Arcadia Lodge is a Russell landmark, a turn of the century home and luxury bed and breakfast overlooking Russell's tranquil Matauwhi Bay.

Meals included: Breakfast



---

## Day 4



### Cape Reinga Scenic Aeroplane Flight and Guided Tour

Today experience the beauty of the North from both air and land. Take a spectacular scenic flight to Cape Reinga over Whangaroa Harbour and the Rangaunu Harbour as well as Coopers Beach, Doubtless Bay and Ninety Mile Beach. The tour also includes a visit to the Cape Reinga lighthouse.

---

### Your accommodation: Arcadia Lodge, Russell

Arcadia Lodge is a Russell landmark, a turn of the century home and luxury bed and breakfast overlooking Russell's tranquil Matauwhi Bay.

Meals included: Breakfast



## Day 5



### Bay of Islands to Waipoua Forest to Matakana

Heading west from the Bay of Islands you leave the Pacific Ocean and soon arrive into the Hokianga and the wilder seas of the Tasman. The small townships of Omapere and Opononi have a great seaside feel and the perfect place to stop for an ice cream. The route now heads south and into the Waipoua Forest, home to the massive Kauri trees. Make sure you allow time to take a few short walks that are signposted as you pass through the region. Not to be missed is the 5-minute loop to view the largest of all the trees Tane Mahuta. Heading back across country the Matakohe Kauri Museum is an award winning museum and has extensive displays of the regions logging, farming and social history. Just a short drive from Warkworth towards the coast is the small township of Matakana and a little further you will find the often deserted beaches of the Tawharanui Marine Reserve.

### Your accommodation: Takatu Lodge

Takatu Lodge overlooks Takatu vineyard and offers 4 elegant lodge suites, each a spacious and relaxing retreat. Located in the Matakana region, you're a short drive from beaches and the village of Matakana, with its fabulous weekend farmers market and many dining options.

Meals included: Breakfast



## Day 6



### Matakana to Coromandel Township

Continuing south you pass through New Zealand's biggest city, Auckland and soon you will pass the city boundaries where the landscape changes to rolling lush farmland. The fertile Hauraki Plains are one of New Zealand's largest dairy producing regions. The Thames Estuary is a haven for wildlife in particular shore birds and a short detour to Miranda (well sign posted) is worthwhile to see the large flocks of godwits and oyster catchers amongst others. Arriving into the old gold town of Thames you can choose two different routes to the Coromandel's east coast. Straight over the Coromandel Ranges on highway 25A will deliver you to the coast in around 45 minutes. The more scenic route however takes you north to Coromandel Township along the Pohutukawa Coast (part of the Pacific Coast Highway). This is one of the most spectacular drives in the region and not to be missed.

### Driving Creek Railway & Potteries - EyeFull Tower Tour

Driving Creek Railway and Potteries has become a Coromandel icon. The dream of Barry Brickell was to establish a pottery workshop on his land. Using a railway he would have access to the clay on the land and the pine kiln fuel. Over the next 15 years the railway developed until in 1990 it was finally licensed to carry fare paying passengers and ever since thousands of visitors have made the trip to Coromandel to experience this unique attraction. The 1 hour return train trip on the innovatively designed trains takes you through replanted native kauri forest and includes 2 spirals, 3 short tunnels, 5 reversing points and several large viaducts as it climbs up to the mountain-top terminus. The pottery is still producing and you can watch the artists at work as well as purchase items. It is important you read and understand the risks associated with this activity. For more information please see here.

### Coromandel Township to Whitianga

The short drive from Coromandel Township to Whitianga takes you via the scenic coastline of Whangapoua Harbour and the Kuaotuna beach. For beach lovers there are plenty of side roads to often deserted golden sand beaches and bays. Whitianga sits on Mercury Bay on the eastern coast of the Coromandel peninsular, Captain Cook arrived there in 1769 to observe the transit of Mercury and hence the bay was named. This small bustling town once played a major part in the kauri logging industry with over 150 million metres of timber being exported between 1830 and the end of the century. The Whitianga museum, housed in the old dairy factory displays an interesting collection designed to relay engrossing tales of the time. Today the town has a many cafes and craft shops with its income derived mainly from tourists. The summer months bring visitors to enjoy fishing, surfcasting and swimming along the palm fringed beaches. But the largest attraction is probably the big game marlin fishing with many charters available to hunt in the rich waters of the Pacific Ocean. On the other side of the harbour is Australasia's oldest stone wharf from where a passenger ferry takes visitors to the delightful Cooks Beach just a 5 minute walk along the road. Nearby is Buffalo Beach, named after H.M.S. Buffalo, a ship taking convicts and settlers to South Australia that blew aground in 1840.

## Your accommodation: 970 Lonely Bay Lodge

970 Lonely Bay Lodge is luxury boutique accommodation in Cooks Beach, Whitianga, New Zealand. Accommodation includes three one bedroom suites and a premier two bedroom (honeymoon) suite, all with en suite, extensive mini-bar, spacious terrace and bush or water views of Purangi Estuary and Cooks Beach.

Meals included: Breakfast



---

## Day 7



### Explore Whitianga

Whitianga is located at Mercury Bay on the eastern coast of the Coromandel peninsular, a 3 hour drive from Auckland and 1 1/2 hours from Thames. Captain Cook arrived there in 1769 to observe the transit of Mercury and hence the bay was named. This small bustling town once played a major part in the kauri logging industry with over 150 million metres of timber being exported between 1830 and the end of the century. The Whitianga museum, housed in the old dairy factory displays an interesting collection designed to relay engrossing tales of the time.

Today the town has a many cafes and craft shops with its income derived mainly from tourists. The summer months bring visitors to enjoy fishing, surfcasting and swimming along the palm fringed beaches. But the largest attraction is probably the big game marlin fishing with many charters available to hunt in the rich waters of the Pacific Ocean.

On the other side of the harbour is Australasia's oldest stone wharf from where a passenger ferry takes visitors to the delightful Cooks Beach just a 5 minute walk along the road. Nearby is Buffalo Beach, named after H.M.S. Buffalo, a ship taking convicts and settlers to South Australia that blew aground in 1840. As well as Opito Bay, Flaxmill Bay and Kuaotuna Beach to name but a few of the many locations easily visited from Whitianga, the region is well worth a visit.

---

### Coves, Caves and Coastline Cruise from Whitianga

Explore the volcanic coastline with its many caves, blowholes and golden beaches all from the comfort and safety of an ex coastguard 28 ft cruiser. Departing from Whitianga Wharf journey past the towering Shakespeare's Cliffs and historic Cooks Beach. Visit Cathedral Cove and the islands in the marine reserve. There is also a chance to swim with the abundant fish in the reserve (on board snorkel gear provided - don't forget your swimsuit and towel). For those who prefer to stay dry an underwater camera relays images to an onboard TV.

---

## Your accommodation: 970 Lonely Bay Lodge

970 Lonely Bay Lodge is luxury boutique accommodation in Cooks Beach, Whitianga, New Zealand. Accommodation includes three one bedroom suites and a premier two bedroom (honeymoon) suite, all with en suite, extensive mini-bar, spacious terrace and bush or water views of Purangi Estuary and Cooks Beach.

Meals included: Breakfast



---

## Day 8



### Whitianga to Rotorua via Tauranga

Heading south from the Coromandel Peninsula you pass through the seaside town of Whangamata, a popular location for Kiwi holidaymakers and home to one of the best beaches in the region. Next, you come to the old mining town of Waihi which still has an operating open cast gold mine (Martha Mine) that can be viewed from a vantage point just above the town centre.

For rail enthusiasts, the Goldfields Railway operates passenger trains along a scenic and historic section of track towards Waikino. The route now takes you into the Bay of Plenty and the port town of Tauranga before you head along the scenic Pyes Pa Road to Rotorua. For Lord of the Rings fans, a detour to Matamata is recommended as this is the location of the Hobbiton film set. Arriving in Rotorua from the north you are welcomed by the spectacular view of the lake.

## Explore Rotorua

Peppered with natural hot springs, boiling mud pools and steaming geysers, Rotorua sits within one of the world's most active volcanic regions. Geothermal landmarks aside, this city of sulphur has a rich indigenous history. Home to several prominent Maori tribes, a visit to one of the Maori Villages should be high on your agenda, as should an excursion to the Polynesian Spa for an invigorating soak in its natural mineral hot springs.

Spike your adrenaline at Velocity Valley Adventure Park on stomach-dropping attractions such as static skydiving, or a giant swing reaching 130 km per hour. Alternatively, head up the Rotorua Gondola for soaring lake views, and ride the luge at night for an extra thrill.

Fans of Lord of the Rings and The Hobbit should drive to nearby Matamata and experience the actual movie set 'Hobbiton'. Make the most of your time in Rotorua with an excursion through the Wai-O-Tapu Thermal Wonderland, one of the area's most colourful volcanic attractions.

---

### SUGGESTED ACTIVITY - Polynesian Spa Deluxe Lake Spa

Rotorua's Polynesian Spa offers a unique thermal spa experience on the shore of Lake Rotorua. You'll enjoy tranquil bathing and lake views in four shallow alkaline rock pools, each with different temperatures (36°C to 42°C). Here you are surrounded by revitalising native New Zealand flora, natural rocks, the sound of two waterfalls and a grotto. The pools are filled with soothing alkaline mineral water leaving your skin soft and supple. Relax in the outdoor relaxation area overlooking the four hot mineral pools and Lake Rotorua, here you can further unwind on the five geothermally heated recliners set in the stunning backdrop of New Zealand's lush and natural greenery. A large indoor relaxation lounge also overlooks Lake Rotorua, whereas a Lake Spa guest, you are welcome to move from the pools to the lounge once dried off and return to bathe in the Lake Spa pools as you wish. The Lake Spa is a unique thermal pool environment, where the atmosphere changes from day to night, and from winter steam to summer sparkle.

---

### Your accommodation: On the Point

On the Point is a beautiful lodge accommodation in a stunning location and offering panoramic views. It also offers gourmet New Zealand food and wine, as well as a range of on site activities from pampering massage, fly fishing from the private beach, water sports, tennis, gym and boating and is only 10 minutes from the heart of Rotorua City.

Meals included: Breakfast, Dinner



---

## Day 9



### Mount Tarawera & Orakei Korako Thermal Explorer by Helicopter

Combine the thrill of landing on Mount Tarawera with a flight that includes spectacular aerial views of Rotorua's stunning crater lakes, the renowned Tarawera Falls and the vibrant Waimangu and Wai-O-Tapu geothermal reserves.

Leaving Wai-O-Tapu, descend to follow the Waikato River to the hidden valley of Orakei Korako. Once landed, you will ferry across the river and begin your land-based tour. Experience hot springs, gushing geysers and the natural beauty of this geothermal wonderland. The return flight takes in views of farmland and the Paeroa mountain range before flying over Rotorua City and returning to the lakefront pier.

---

### Your accommodation: On the Point

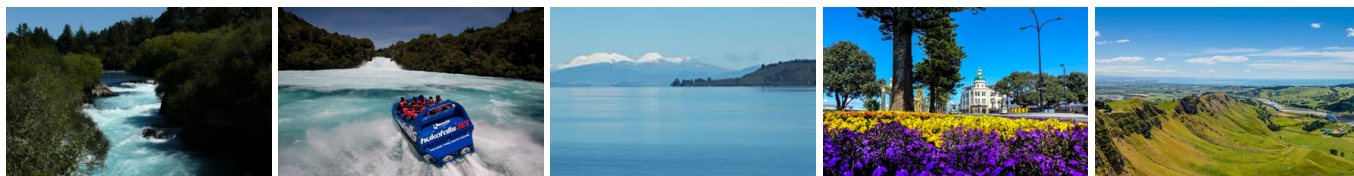
On the Point is a beautiful lodge accommodation in a stunning location and offering panoramic views. It also offers gourmet New Zealand food and wine, as well as a range of on site activities from pampering massage, fly fishing from the private beach, water sports, tennis, gym and boating and is only 10 minutes from the heart of Rotorua City.

Meals included: Breakfast, Dinner



---

## Day 10



## Rotorua to Napier

This drive will take you through the thermal region just south of Rotorua. Home to a plethora of unique geothermal attractions including boiling mud pits, natural hot springs and steaming geysers, this area is a must do before you move on to Napier. Notable attractions are Wai-O-Tapu, Waimangu and Craters of the Moon.

Continue on to Taupo and marvel at the lake, a giant crater formed following a volcanic eruption in the year 180 CE. As you approach the city, be sure to stop at Huka Falls to view the spectacular sight of hundreds of cubic metres of water spilling every second down the narrow 11 metre drop.

For an extra thrill take a jet-boat ride to the base of the falls. Leaving Taupo, follow the road as it climbs the rugged Ahimanawa Range before descending back down the Pacific Coast to art deco Napier.

---

## Napier City

Napier, the city by the sea, is renowned for its 1930s Art Deco architecture, events such as the Art Deco Weekend in February, stately Norfolk pines, surrounding wineries and local fresh produce. Supported by a Mediterranean climate and over 2,200 hours of sunshine a year this popular year-round destination boasts a vibrant cafe culture amongst the splendour of the Art Deco buildings.

Around 30 cafes are within walking distance of the central city area, while Ahuriri, just over Bluff Hill, is home to a further cluster of up market establishments. Marine Parade overlooks the Pacific Ocean and out towards Cape Kidnappers, home to the world's largest mainland gannet colony. A full day can be taken visiting Ocean Spa hot pools and swimming complex, the Hawke's Bay Museum and the National Aquarium of New Zealand.

A landmark of Napier is Bluff Hill, which is home to many Napier residents and provides views of the town, beaches of Perfume Point and Westshore and out towards Whirinaki. Bluff Hill also overlooks the Port of Napier, one of New Zealand's busiest ports, transporting timber, local fruit and meat products to worldwide destinations.

In 1931, New Zealand's greatest natural disaster struck Hawke's Bay. At 10.47am on Tuesday February 3rd, an earthquake of magnitude Richter 7.8 struck. In a minute and a half, in two separate shocks, the centre of Napier was almost totally destroyed. Fires quickly broke out and reduced to ashes or gutted what the tremors had left standing. Damage in Hastings was also devastating, although the fires were contained. Wairoa and the smaller towns to the south as far as Dannevirke were affected. There were 258 deaths - 162 in Napier, 93 in Hastings and 3 in Wairoa along with many injuries. The reconstruction of Napier and Hastings was costly but the benefit was two modern cities and the Ahuriri Lagoon, or Inner Harbour as it was usually known, was raised over 2 metres, creating the land, which Napier desperately needed to expand.

---

## Your accommodation: McHardy Lodge

This beautifully restored, single storey 1890's residence is nestled in a quiet cul de sac on Napier Hill, a great location from which to explore the Art Deco city. Experience a 5 star boutique Bed & Breakfast experience with unparalleled facilities and luxurious rooms.

Meals included: Breakfast



## Day 11



## Explore Napier and the Hawke's Bay

With its Mediterranean climate and Art Deco style, Hawke's Bay is an attractive holiday prospect. As the nation's first winemaking region, a visit to one of its 30 wineries is a must. A trip to Mission Estate touted as the birthplace of NZ wine can't be missed. For the truly enthused head out on a tour of the vines. Those into Gatsby will enjoy the chance to view prominent Art Deco landmarks on a 1930s Vintage Car Tour. Passengers will spend just over an hour learning about the history of the city's architecture including the Napier Municipal Theatre, one of the top ten Art Deco Buildings in the world. If you're after some fresh air, hire a bike and take your pick of one of over 200km of cycling trails or head on down to one of the many beaches that ring the area. Ocean or Waimarama beach are good choices and both are patrolled by surf lifeguards during the summer. Indulge in some local produce and head out on a cheese, chocolate, honey or orchard tour.

---

## Walking tracks in and around Hawkes Bay

Hawke's Bay offers a variety of scenic walks, from coastal paths to forest trails, perfect for exploring the region's natural beauty. Whether you're looking for a short stroll or a more challenging hike, there's something for everyone. Be sure to check with the Department of Conservation for current conditions before heading out.

---

## SUGGESTED ACTIVITY - Hawkes Bay Wine and Dine Tour with Grape Escape

Experience a fun-filled Grape Escape wine and dine tour in the sun driving through absolutely stunning scenery. Meet like-minded people and share an appreciation of this region's fantastic wine. We visit four to five boutique wineries. Later, we enjoy a light cheese platter on the grounds of Ngatarawa or Sileni, weather dependent. You will taste around 30 different wines along with the main varieties, including Merlot, Syrah, Chardonnay, Sauvignon Blanc, Pinot Gris, Viognier, and lesser-known aromatics such as Cabernet Franc, Gewurztraminer, and Riesling.

---

## Your accommodation: McHardy Lodge

This beautifully restored, single storey 1890's residence is nestled in a quiet cul de sac on Napier Hill, a great location from which to explore the Art Deco city. Experience a 5 star boutique Bed & Breakfast experience with unparalleled facilities and luxurious rooms.

Meals included: Breakfast



---

## Day 12



### Napier to Martinborough

As you leave the rolling countryside of the Hawke's Bay you'll be greeted with some of the country's richest dairy farmland in the Manawatu Gorge. Continue on through the Wairarapa region and stop in the Pukaha Mount Bruce Wildlife Centre, where you can see some of New Zealand native animals. Take another break in Masterson, and visit the interactive Woolshed Museum to learn about sheep farming in New Zealand. As you drive south, a visit to historic Greytown is a must-do. Take in the restored Victorian buildings and make time for a cup of tea at one of its quaint cafes. Leaving state highway 2 you will cross over the Ruamahanga River into Martinborough wine country your destination for the day.

---

## Your accommodation: The Martinborough Hotel

At the Martinborough Hotel, indulge in the elegant surroundings of this 1882 building. There are nine Verandah Rooms, at the top of the grand flight of stairs and seven spacious Garden Rooms finished in a restful simple country style.

Meals included: Breakfast, Dinner



---

## Day 13



### Martinborough to Wellington City

Today you will cross the Rimutaka Ranges as you make your way to New Zealand's capital city, Wellington. Often compared to Melbourne, Wellington is vibrant cultural hub. Home to the nation's centre of government. Legislation happens in the aptly named 'Beehive', an executive wing attached to the Houses of Parliament. At one kilometre squared, the city centre (easily traversed on foot) has an international feel and is peppered with underground art shows, alleyway cafes and New York style delis. Take in the boardwalk view as you stroll to Te Papa Museum or indulge your cinematic side exploring Weta Workshop, the Oscar Award winning design studio for Lord Of The Rings. For a taste of vintage fashion, spend some time (and dollars!) on Cuba Street browsing the boutiques. Work off last night's dinner with a cycling tour of Oriental Bay and undo your good work with a Hokey Pokey ice-cream in the sun. For those heading further down, the capital is where you board the ferry crossing the Cook Strait to the South Island.

---

## Zealandia By Night Wildlife Sanctuary Tour

Taking a night tour of Zealandia wildlife eco-sanctuary is an unforgettable experience and one that comes highly recommended. A conservation success and safe haven for some of New Zealand's rarest native animals, Zealandia is home to many remarkable species of birds, reptiles and insects living wild within a beautiful 225 hectare (one square mile) valley, just 10 minutes from the central city.

Your tour begins with an interactive exhibition before you walk through the gates of Zealandia predator-exclusion fence into the sanctuary. Your guide will then lead you on a torch-light walk through the native New Zealand bush. Possible sights include Kiwi foraging on the forest floor, tuatara hunting for food, glowworms shining, tiny Maud Island frogs in their enclosure, pateke (brown teal) ducks feeding at night and kaka (parrots) coming in to roost. Zealandia is one of the best places to see kiwi in the wild. Over 100 of these nocturnal birds live freely in their natural environment inside the safety of the sanctuary valley, so your chances of seeing one are high!



## Your accommodation: Bolton Hotel Wellington

The Bolton Hotel offers contemporary apartment-style accommodation in the heart of Wellington. Just steps from the Parliament buildings and central business district, Bolton Hotel is conveniently close to the best of the city's shops, cafes and restaurants and is within walking distance of Wellington's vibrant waterfront.

Meals included: Breakfast, Dinner



---

## Day 14



### Interislander Ferry Wellington to Picton

The 92 km journey between Wellington and Picton takes around 3 hours and has been described as 'one of the most beautiful ferry rides in the world'. Leaving Wellington Harbour you pass many interesting points such as Pencarrow Head on top of which is New Zealand's oldest lighthouse (1859). Red Rocks is home to a seal colony and Oterangi Bay is the site which recorded the country's highest ever wind speed of 268 kph (167 mph).

From the Cook Strait spectacular views of the Kaikoura Ranges on the South Island can be enjoyed and dolphins and many sea birds are often seen. Around one hour of the cruise takes you through the Marlborough Sounds and this region of bush covered mountains, small islands, crystal clear waters and secluded bays offer remarkable photographic opportunities. The final leg of your cruise travels through Queen Charlotte Sound before coming to an end in the picturesque town of Picton.

---

### Collect your rental car

This tour can be priced with any of the rental cars available in our fantastic range, from economy hatchbacks to prestige saloons and SUV's.

---

### Picton to Abel Tasman National Park

From Picton you'll first travel the Marlborough sounds coastline between Picton and Havelock. This drive offers spectacular views of the sounds, so be sure to allow plenty of time for stops and sightseeing. Take moment to explore the secluded sandy coves along the narrow road to Portage. Aim to arrive in Havelock for lunch, as this portside town has a great variety of cafes and restaurants to eat at. Stop at the famous Pelorus bridge, just outside of Havelock. From here there are a number of forest walks to stretch your legs on with the most popular being a 30 minute loop through beech, rimu and totara forest. Continue on over the Bryant Range to arrive into Tasman Bay and the city of Nelson. Motueka is a further 45 minutes along the coast and from there it's just a short drive to Kaiteriteri and Marahau, all ideal spots from which to explore the beautiful Abel Tasman National Park.

---

## Your accommodation: Te Koi the Lodge at Bronte

Luxury accommodation nestled in a tranquil, natural waterfront setting on Nelson's historic Bronte Peninsula. Surrounded by extensive mature gardens, orchards and vineyard, the elegant spacious suites have their own private patio and spa bath for relaxing. In the main garden enjoy the heated pool, tennis and petanque or explore further afield by bike or canoe.

Meals included: Breakfast



---

## Day 15



## Beaches, Bays and Seals Guided Sea Kayaking Trip Including Picnic Lunch

Combining the best of the Abel Tasman, this trip showcases incredible beaches, coastal walks and native wildlife. First you'll meet your guide and join the 9.30 am Vista Cruise along the magnificent coastline to Torrent Bay. You'll then arrive at Torrent Bay Lodge and complete a full training session and safety briefing before moving on to the water in kayaks to discover beautiful beaches, tidal estuaries and rivers.

Stop for a picnic lunch in a sheltered cove and take some time to swim, explore or sunbathe on the sand. On your return trip, if the winds are favourable, sails will be hoisted and you'll sail back via Pinnacle Island to view the seal colony there - if you're lucky, you may even see some resident blue penguins at the same time. Arriving back at Torrent Bay Lodge, freshen up with a hot shower and re-join the vista cruise back to Kaiteriteri, arriving at 4.10 pm.

During the summer there is the option to enjoy an unguided two hour coastal bush walk after the kayaking trip. Walk around the picturesque Torrent Bay Lagoon via Cleopatra's Pool to the anchorage where you will re-join the boat back to Kaiteriteri. It is important you read and understand the risks associated with this activity. For more information see [here](#).

---

### Your accommodation: Te Koi the Lodge at Bronte

Luxury accommodation nestled in a tranquil, natural waterfront setting on Nelson's historic Bronte Peninsula. Surrounded by extensive mature gardens, orchards and vineyard, the elegant spacious suites have their own private patio and spa bath for relaxing. In the main garden enjoy the heated pool, tennis and petanque or explore further afield by bike or canoe.

Meals included: Breakfast, Lunch



---

## Day 16



### Abel Tasman National Park to Kaikoura

Embark on a stunning journey from the golden beaches of Abel Tasman National Park to the coastal haven of Kaikoura. Travel through the scenic landscapes of the Marlborough region, passing lush vineyards and rugged mountains. You will pass through Marlborough and Blenheim, New Zealand's largest wine-growing regions - and home to many award-winning wines. We recommend timing your day to arrive for lunch with a view to sampling some of the local offerings at one of the 40-plus wineries surrounding the area. Continue over the dry hills of the Marlborough Ranges to one of the most spectacular coastlines in the world, Kaikoura. For over 50 kilometers (30 miles) follow the shoreline. Keep an eye out for an abundance of seals, seabirds and other native wildlife. Kaikoura is also one of the only places in the world where whales can be seen all year round. To the east, you'll see the Pacific Ocean while the West brings views of the towering Kaikoura ranges. Arriving in the Kaikoura township, you'll find it bustling with cafes and restaurants.

---

### Your accommodation: Hapuku Lodge & Tree Houses

Hapuku Lodge was built to give guests a great night's sleep in one the most beautiful places in the world. The Lodge sits tight between the mountains and the ocean, on a deer stud and olive farm.

Meals included: Breakfast, Dinner



---

## Day 17



## Kaikoura

Kaikoura is a breathtaking seaside town teeming with marine life and natural beauty. As you wander through this coastal paradise, you'll be enveloped by the fresh sea breeze and the sounds of the ocean. Begin your adventure by observing the lively fur seal colony at the tip of the peninsula. For an unforgettable experience, board a boat to go whale watching and marvel at the majestic whales that call these waters home year-round. If you're feeling adventurous, take the plunge and swim with the playful dusky dolphins in their natural habitat. For bird enthusiasts, Kaikoura offers the chance to get up close with the native albatross, an awe-inspiring sight. The town is rich with attractions, walking tracks, and activities for every visitor. A walk around the Kaikoura Peninsula is a must, where you can explore tide pools teeming with marine life, observe sea creatures basking on the rocks, and watch seabirds soaring above. Be sure to keep a respectful distance from the sleeping sea lions you might encounter along the way. Ohau Point is another highlight, where you can watch fur seals frolic in their natural environment. To delve into Kaikoura's fascinating history, visit Fyffe House. This historic whaler's cottage offers a glimpse into the town's whaling past and its evolution over the years. No trip to Kaikoura is complete without sampling the local seafood. Renowned for having some of the best fish and chips in the country, Kaikoura's eateries serve fresh catches straight from the morning's haul, ensuring a delicious and authentic dining experience. If you need a break from the action, unwind at Lavendyl Lavender Farm. Stroll through the fragrant lavender fields, relax in the serene atmosphere, and browse the gift shop for a variety of lavender products. Kaikoura seamlessly blends adventure, history, and relaxation, making it a perfect destination for travelers seeking a unique and enriching experience.

### Ocean's Cabin with Whale Watch Kaikoura

Experience New Zealand's only marine based whale watching company. Whale Watch Kaikoura offer a once-in-a-lifetime, up close encounter with the giant Sperm Whale. You are also likely to encounter New Zealand fur seals, dusky dolphins and albatross. Depending on the season you may also see pilot, blue and southern right whales as well as migrating humpbacks. Often orcas can be spotted here and the world's smallest dolphin, the Hector's, occasionally make an appearance.

Cruise in style on modern catamarans, specifically designed for whale watching, featuring large passenger cabins and outside viewing decks. Passenger numbers for each tour are kept below the vessel carrying capacity to ensure your tour experience remains a personal one.

### Your accommodation: Hapuku Lodge & Tree Houses

Hapuku Lodge was built to give guests a great night's sleep in one of the most beautiful places in the world. The Lodge sits tight between the mountains and the ocean, on a deer stud and olive farm.

Meals included: Breakfast, Dinner



## Day 18



### Kaikoura to Christchurch

Today you travel down the coast before heading inland through the North Canterbury wine region - the Waipara Valley. As you drive through this area you'll be greeted by one of New Zealand's most notorious animals, the sheep. If you've time on your hands we recommend taking a detour to Hanmer Springs for relaxing dip in its thermal pools. Arriving into Christchurch you'll see a new and improved city, steadily rising from the ruins of the 2011 earthquake.

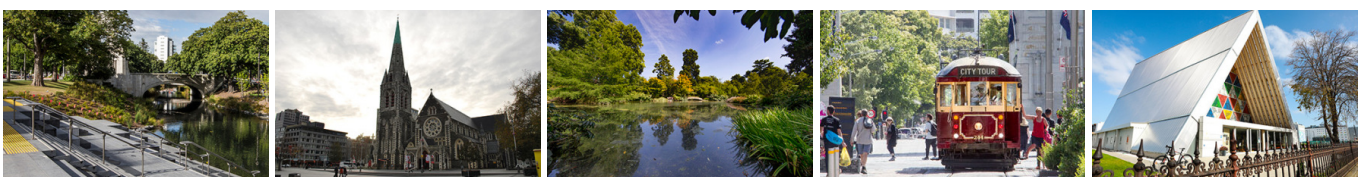
### Your accommodation: Orari Bed & Breakfast

Orari Bed and Breakfast offers elegant and inviting accommodation in the heart of Christchurch city. This heritage building has all the charm of a grand Victorian home, but with modern comforts providing for an enjoyable stay.

Meals included: Breakfast



## Day 19



## Explore Christchurch City

Following the 2011 earthquake that razed its centre and much of the outlying suburbs, Christchurch is well into a billion-dollar makeover. In the middle of the Canterbury Plains, bordering the Pacific Ocean, New Zealand's newest city is an ideal gateway to exploring the middle of the South.

Go punting on the Avon River, take a historic tram ride, catch the gondola to the rim of an extinct volcano or do all three! See the world's only Cardboard Cathedral and for nature enthusiasts - wander the renowned Christchurch Botanic Gardens, or head to Oxford Terrace in the city to find a great spot to eat or drink.

Drive an hour in any direction to ski, mountain bike, wine taste, whale-watch, bungee jump or play golf. Take the winding Port Hills road to the French settlement of Akaroa and tour the vines in Waipara for an authentic New Zealand wine-tasting experience. &nbsp;

---

## Christchurch Gondola

In the Heathcote Valley, just fifteen minutes from the heart of Christchurch City, ride the Christchurch Gondola for nearly a kilometer to the collapsed rim of an extinct volcano, which exploded six million years ago. Take in the spectacular panoramic views of the central city, Lyttelton Harbour, Banks Peninsula, Canterbury Plains, and the distant peaks of the Southern Alps. Wander the summit complex, enjoy a coffee or lunch in the cafe, and choose one of many nature walks to explore or visit the Christchurch Discovery Ridge, a dramatic reconstruction of the history of the Port Hills and Christchurch.&nbsp;

---

## Your accommodation: Orari Bed & Breakfast

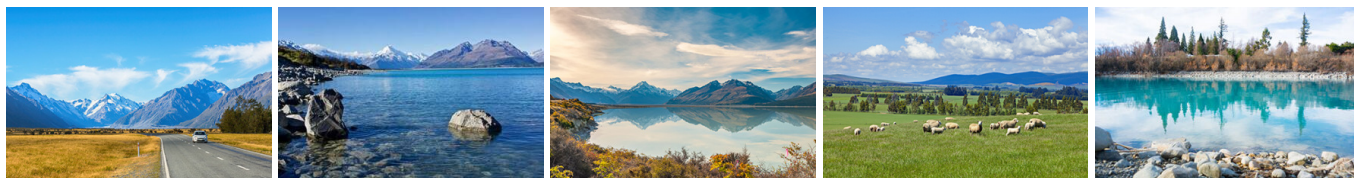
Orari Bed and Breakfast offers elegant and inviting accommodation in the heart of Christchurch city. This heritage building has all the charm of a grand Victorian home, but with modern comforts providing for an enjoyable stay.

Meals included:            Breakfast



---

## Day 20



## Christchurch to Aoraki Mt Cook National Park

Today you'll drive through the heart of the South Island, crossing the vast Canterbury plains. Catch your breath in Geraldine before continuing through Fairlie. Ascending Burkes pass you'll come to the picturesque lakeside town of Tekapo.

Follow the road and take in the view of Aoraki Mt Cook (New Zealand's tallest mountain) from the shores of Lake Pukaki, known for its glacier fed turquoise blue colour. Continue along the lake to your final destination Mt Cook Village.

---

## Glacier Explorers Mt. Cook

Experience 500 year old icebergs up-close on the Mt Cook terminal lake. The Glacier Explorers tour is the only one of its kind in New Zealand and one of only three in the world! Very few glaciers terminate into lakes and even fewer of them are accessible. See towering ice cliffs and floating icebergs from the safety of a specially designed boat. These boats provide a safe way to view unseen and inaccessible areas of New Zealand's largest glacier The Tasman.

---

## Your accommodation: Hermitage Hotel, Aoraki Wing Premium

The Hermitage Hotel ringed by magnificent snow-capped peaks of the Southern Alps, is a world-renowned tourist destination and has been an icon of superior accommodation and dining since 1884.

Meals included:            Breakfast, Dinner



---

## Day 21



## Aoraki Mt Cook National Park to Dunedin

Today you'll leave Aoraki Mt Cook National Park and travel past Twizel, one of the locations for the Lord of the Rings films. Go through Omarama, the gliding capital of New Zealand, be sure to stop at The Wrinkly Ram, a quirky local cafe and souvenir store. Driving through the Waitaki Valley follow the hydro power generating system towards the east coast. Stretch your legs in Oamaru, known for its white stone buildings constructed with the local Oamaru Stone. If you were a little late off the mark this morning you may get the chance to see the blue penguins come ashore at dusk.

Continue south down the coast to Moeraki, and take a detour towards the beach to see the Moeraki Boulders, a unique geological feature well worth a look. As you arrive in Dunedin, take in the city's Edwardian and Scottish heritage reflected in the buildings around the city centre The Octagon.

---

### Dinner at Camp Estate, Larnach Castle

Keeping with the historical setting of Larnach Castle, a four-course dinner is offered in a grand Castle Dining Room. This is a trust-the-chef experience where you may indulge in incredible meals and meet other guests. The menu reflects local meats and vegetables, served in a traditional New Zealand-style cuisine with the opportunity to pair with regional wines.

---

### Your accommodation: Camp Estate at Larnach Castle

A luxurious country house built from blue stone and features a spectacular marble staircase. The modern rooms are all double glazed and the reception rooms are all heated by open fires and underfloor heating. Staying at Camp Estate includes entry to Larnach Castle and the grounds.

Meals included: Breakfast, Speciality Dinner



---

## Day 22



### Wildlife Peninsula Encounter Tour Including Wildlife Cruise with Monarch

A small-group bus tour from Dunedin. Join a local guide for a journey across the Otago Peninsula. Travel over the high road with postcard views of the harbour and coast. You'll travel past quaint communities and rural farms. Spot wading birds as your mini-bus explores around the inlets and the wetland eco-systems. Your tour will visit a remote Otago Peninsula beach. A short walk from the mini-bus will provide dramatic views of rugged coastal cliffs, offshore islands and perhaps some huge sea lions. The trip continues to Wellers Rock Wharf, for a Monarch Wildlife Cruise. You'll travel out of the harbour, around Tairaroa Head, and out to sea. Watch royal albatross glide across the water and return to their breeding colony. Beneath a historic lighthouse is a colony of playful fur seals. You'll spot other rare seabirds and maybe blue penguins or other marine mammals. You are also welcome to bring a pre-packed meal on tour with you. Snacks and drinks can be purchased whilst aboard the MV Monarch. We recommend having a good-sized lunch before the tour departs Dunedin. The final stop is at a Yellow-eyed Penguin conservation reserve. Visit the on-site rehab centre before a tour of the reserve. You'll take trails through native bushland, walking through tunnels and trenches to different viewing hides scattered around the reserve. Watch as the world's rarest penguin returns ashore and interacts around their nesting sites. The tour ends with a relaxed drive, following the harbour, back to Dunedin.

---

### Dinner at Camp Estate, Larnach Castle

Keeping with the historical setting of Larnach Castle, a four-course dinner is offered in a grand Castle Dining Room. This is a trust-the-chef experience where you may indulge in incredible meals and meet other guests. The menu reflects local meats and vegetables, served in a traditional New Zealand-style cuisine with the opportunity to pair with regional wines.

---

### Your accommodation: Camp Estate at Larnach Castle

A luxurious country house built from blue stone and features a spectacular marble staircase. The modern rooms are all double glazed and the reception rooms are all heated by open fires and underfloor heating. Staying at Camp Estate includes entry to Larnach Castle and the grounds.

Meals included: Breakfast, Speciality Dinner



## Day 23



### Dunedin to Te Anau

The drive to Te Anau takes you through classic Southland farming scenery. Head off-the-beaten-track today and follow the coastline instead of the inland route. Go through The Catlins area and be sure to take a detour to Kaka Point to view its majestic cliffs and pounding surf. Continue through Invercargill to Riverton and Colac Bay, and then head north to Manapouri. From here you can embark on a day or overnight cruise to the remote Doubtful Sound, renowned for its natural beauty. Just a short way further will bring you to your lakeside destination of Te Anau, gateway to Fiordland National Park and Milford Sound.

### Your accommodation: Fiordland Lodge

Set in a World Heritage area Fiordland Lodge offers the discerning traveller comfort and privacy. The elegance and splendour of the Lodge is mirrored in the breathtaking views of Lake Te Anau and Fiordland. Private and serene, the Lodge is perfect for relaxation, or as a base for your Fiordland experience.

Meals included: Breakfast, Dinner



## Day 24



### Te Anau to Manapouri

This short drive takes you along the lake edge of Te Anau and across lush southern farmlands to the small township of Lake Manapouri, gateway to Doubtful Sound.

### Doubtful Sound Fiordland Navigator Overnight Cruise

Take in the tranquillity of remote Doubtful Sound on this unique overnight wilderness cruise. Beginning in Manapouri with a short boat ride across the lake, you'll be taken by coach over the Wilmot Pass to Deep Cove, Doubtful Sound. Board the Fiordland Navigator, a purpose-built vessel designed like a traditional coastal trading scow. Be accommodated in a private cabin with an ensuite bathroom or a quad-share bunk room with shared bathroom facilities. The Navigator has a large spacious deck for viewing the scenery and wildlife as well as a dining saloon, bar and observation lounge. As you take in the stunning scenery of the Fiord, you'll be provided with a running commentary of the area and its history, points of interest and wildlife. You'll have the opportunity to see dolphins, fur seals and, if you're lucky rare Fiordland penguins. After anchoring in a sheltered cove, choose to explore the shoreline by kayak or stabicraft, or if you're really brave take a dip in the water. In the evening enjoy a three-course buffet dinner prepared on board and served in the dining saloon. Enjoy beer and fine wines from the licensed bar, and spend time star gazing on the upper deck. Following hearty cooked breakfast the next morning you will spend your remaining time exploring other parts of the fiord before returning to Deep Cove for the trip back to Manapouri.

### Your accommodation: Fiordland Navigator Overnight Boat in Doubtful Sound

The Fiordland Navigator is purpose built for cruising in the fiords. The vessel offers spacious viewing decks, a comfortable dining saloon and observation lounge.

Meals included: Breakfast, Lunch, Dinner



## Day 25



### Manapouri to Queenstown

Crossing the rolling tussock lands you pass through Mossburn, the deer capital of New Zealand. Continue north through Southland countryside towards Lake Wakatipu. The road now hugs the lake edge and the Remarkable mountain range towers over you as you approach Queenstown, the adventure capital of New Zealand.

### Explore Queenstown

Well-known as New Zealand's 'adventure capital', Queenstown is home to a range of adventures, from the world's first and most famous bungy jumps to jet boat thrills, white-water rafting, and skydiving. However, Queenstown offers far more than a fast-paced, action-packed holiday. Settled on the shores of beautiful Lake Wakatipu beneath a soaring panorama of the Remarkables Mountain Range, this alpine town is surrounded by many historic, gastronomic, and scenic wonders. Take a stroll through the beautiful lakefront parks and gardens, browse through market stalls on weekends, dine in wonderful al-fresco restaurants, or ride on the 100-year-old historic Steamship - TSS Earnslaw to Walter Peak Station. Take the Queenstown Gondola up to Bob's Peak and soak up the panoramic views of the magnificent lake and mountain ranges. And after all of that, if you do want the adrenaline rush, Queenstown is known for taking your pick from the Shotover Jet, Canyon Swing, Zipline, Luge, or Heli-hike.

### Your accommodation: The Dairy Private Hotel by Naumi

The Dairy Private Hotel – a unique blend of exquisite design, rich history and warm hospitality in the city centre. Beginning as Queenstown's original 'dairy' (corner store) in 1920, it has now transformed into an interiors masterpiece after an exquisite refurbishment that features wallpapers from British luxury interiors brand House of Hackney.

Meals included: Breakfast



## Day 26



### Dart River Wilderness Jet

Journey deep into the heart of the world-renowned Mt Aspiring National Park, where myth, heritage and fantasy come to life. As one of Queenstown's most exhilarating activities, the Wilderness Jet adventures on a spectacular journey deep into the heart of the world-renowned Mount Aspiring National Park.

### Your accommodation: The Dairy Private Hotel by Naumi

The Dairy Private Hotel – a unique blend of exquisite design, rich history and warm hospitality in the city centre. Beginning as Queenstown's original 'dairy' (corner store) in 1920, it has now transformed into an interiors masterpiece after an exquisite refurbishment that features wallpapers from British luxury interiors brand House of Hackney.

Meals included: Breakfast, Dinner



## Day 27



## Queenstown to Franz Josef Glacier via Wanaka

From Queenstown you'll cross the Crown Range, the highest sealed road in New Zealand to arrive in the Alpine town of Wanaka, gateway to Mt Aspiring National Park. Skirting the shores of both Lake Wanaka and Hawea, you will enter the small town of Makarora. Stop at Blue Pools for a 1-hour return walk through the native beech forest to a glacier-fed swimming hole. Continue on through the remote seaside settlement of Haast before heading up the wild West Coast highway you pass through ancient temperate rainforests while getting sneak peeks of the wild coast beaches occasionally. Paringa Salmon Farm is worth a stop to stretch your legs, feed the fish, and stop for lunch and refreshments. Keep heading North and be sure to enjoy the view of the ever-changing towering snowcapped Southern Alps Mountain Range. Fox Glacier welcomes you first, then comes your destination for the night Franz Josef township.

### Your accommodation: Te Waonui Forest Retreat

Nestled amongst native West Coast rainforest at Franz Josef is a very special five-star retreat. Designed with utmost care of its precious environment, guests at Te Waonui Forest Retreat will find themselves encircled by rainforest and accommodated in natural and sustainable luxury.

Meals included: Breakfast, Dinner



## Day 28



### Explore Franz Josef

Franz Josef is a small but lively town in the heart of the West Coast, known for its 12 km long glacier. Surrounded by lush rainforest-clad mountains the township has a vibrant and bustling atmosphere. To see the ice from a viewpoint you can walk along the valley floor to the viewpoint below the terminal face. However, to go on the glacier itself you must take a licensed helicopter tour.

### Franz Josef Glacier Helihike

After a thrilling scenic flight, high above the rugged terrain, you will land on the glacier, ready to undertake a 2.15 hour guided glacier hike. Your friendly guide will lead you through some of the most pristine and awe-inspiring glacial scenery in the world. Your guide will choose your route carefully as you go and, with an eye for the most spectacular ice formations, you'll soon be making your way through an extraordinary landscape of towering peaks and glistening blue ice. It is important you read and understand the risks associated with this activity prior to travel. For more information please see here.

### Your accommodation: Te Waonui Forest Retreat

Nestled amongst native West Coast rainforest at Franz Josef is a very special five-star retreat. Designed with utmost care of its precious environment, guests at Te Waonui Forest Retreat will find themselves encircled by rainforest and accommodated in natural and sustainable luxury.

Meals included: Breakfast, Dinner



## Day 29





## Franz Josef to Greymouth Train Station

Today head north along the mighty West Coast highway you pass through ancient temperate rainforests while getting sneak peeks of the wild coast beach occasionally. Whataroa is the next town where you can see one of the world's rarest birds, the New Zealand white heron or Kotuku nest at the Waitangi Roto Nature Reserve, and guided tours from October to March will take you there. Ross is the site of an old gold mining town and some of the old buildings and workings remain. In fact, Ross is still home to one of the few working gold mines left in New Zealand and the local information center offers you the chance to pan for gold. Hokitika is a great place to explore craft and gift stores and head to the coast and take in the endless sea views. The Jade or Greenstone on offer in Hokitika is probably some of the best you will see in the country. The Hokitika Gorge is located 45 minutes inland and offers turquoise waters flowing through a narrow gorge. A great short walk will deliver you to this piece of paradise. Continue on to Greymouth, the largest town on the West Coast and the starting point for the next leg of your journey the TranzAlpine Scenic Train. Drop your rental car at the Greymouth Train Station depot located at the train station building before boarding your train to Christchurch.

---

## TranzAlpine Scenic Train: Greymouth to Christchurch

Considered one of the world's great train journeys, the TranzAlpine Scenic Train takes you from Greymouth to Christchurch. You'll travel across the South Island from the west to the east coast through Arthur's Pass National Park. From the comfort of your carriage see lush beech forest, deep river valleys and the spectacular peaks of the Southern Alps. Descend to the windswept Canterbury Plains before arriving in the city of Christchurch.

---

## Private Transfer Christchurch Train Station to your accommodation

On arrival at the Christchurch train station, you will be met by a private driver and transferred to your accommodation.

---

## Your accommodation: Orari Bed & Breakfast

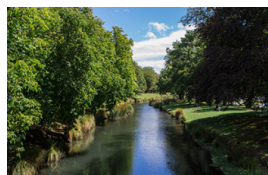
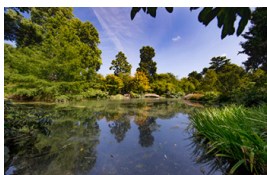
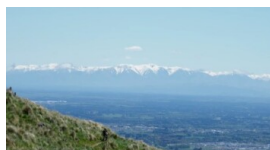
Orari Bed and Breakfast offers elegant and inviting accommodation in the heart of Christchurch city. This heritage building has all the charm of a grand Victorian home, but with modern comforts providing for an enjoyable stay.

Meals included: Breakfast



---

## Day 30



## Private transfer accommodation to Christchurch Airport

A private transfer will collect you from your accommodation and transfer you to Christchurch Airport in time for your departing flight.

---

## Farewell from New Zealand

Bid farewell to New Zealand, taking with you unforgettable memories of its breathtaking landscapes and incredible adventures.

---

---

## Tour details

Departures:	Daily
Tour type:	Nationwide Self Drive
Starts:	Auckland
Finishes:	Christchurch
Tour length:	30
Accommodation:	Boutique Lodges & Hotels
Car/transport type:	

---

## Included activities

Includes	All breakfasts
Includes	10 dinners
Includes	Private airport transfers
Includes	Private train station transfers
Includes	Interislander ferry crossing
Includes	TranzAlpine Train from Greymouth to Christchurch
Includes	Cape Reinga Fly and Drive Tour
Includes	Sail an Americas Cup Yacht
Includes	Helicopter tour to White Island, Rotorua
Includes	Cathedral Cove Cruise
Includes	Driving Creek Railway, Coromendal
Includes	Twilight Odyssey Progressive Dinner and Winery Tour
Includes	Zealandia Wildlife Sanctuary Night Tour, Wellington
Includes	Abel Tasman National Park beaches, bays and seals kayak tour
Includes	Whale Watch Kaikoura tour
Includes	Christchurch Gondola Ride
Includes	Glacier Explorers Tour, Mt Cook National Park
Includes	Wildlife cruise and Yellow eyed penguin colony, Dunedin
Includes	Dart River Wilderness Safari, Glenorchy
Includes	Doubtful Sound Overnight Cruise
Includes	Franz Josef Glacier heli-hike

---

## Accommodation summary

Day 1	Fable Auckland
Day 2	Fable Auckland
Day 3	Arcadia Lodge, Russell
Day 4	Arcadia Lodge, Russell
Day 5	Takatu Lodge
Day 6	970 Lonely Bay Lodge
Day 7	970 Lonely Bay Lodge
Day 8	On the Point
Day 9	On the Point
Day 10	McHardy Lodge
Day 11	McHardy Lodge
Day 12	The Martinborough Hotel
Day 13	Bolton Hotel Wellington
Day 14	Te Koi the Lodge at Bronte

Day 15	Te Koi the Lodge at Bronte
Day 16	Hapuku Lodge & Tree Houses
Day 17	Hapuku Lodge & Tree Houses
Day 18	Orari Bed & Breakfast
Day 19	Orari Bed & Breakfast
Day 20	Hermitage Hotel, Aoraki Wing Premium
Day 21	Camp Estate at Larnach Castle
Day 22	Camp Estate at Larnach Castle
Day 23	Fiordland Lodge
Day 24	Fiordland Navigator Overnight Boat in Doubtful Sound
Day 25	The Dairy Private Hotel by Naumi
Day 26	The Dairy Private Hotel by Naumi
Day 27	Te Waonui Forest Retreat
Day 28	Te Waonui Forest Retreat
Day 29	Orari Bed & Breakfast