



Natural Wonders of New Zealand

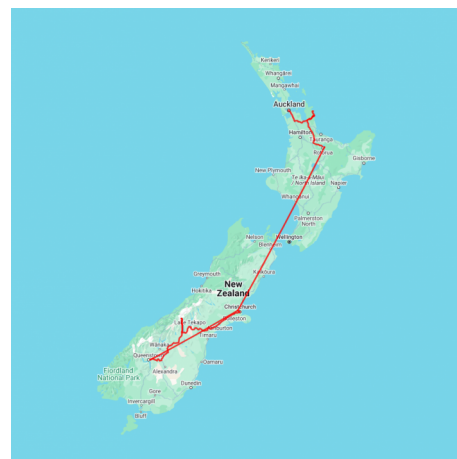
Embark on a bespoke adventure through New Zealand, starting with a private coastline tour in Auckland and the tropical Coromandel Peninsula. Immerse in Rotorua's Māori culture at Te Pā Tū, followed by an unforgettable evening of performances. Savor a gourmet BBQ dinner aboard the historic TSS Earnslaw in Queenstown, then cruise Piopiotahi - Milford Sound for stunning fjord views. Explore Aoraki - Mount Cook National Park, sail on the Tasman Glacier, and stargaze in one of the clearest skies. Conclude with a guided food tour in Christchurch. A luxury journey, tailored just for you.



Starts in: Auckland
Finishes in: Christchurch
Length: 14days / 13nights
Accommodation: Boutique Lodges & Hotels
Can be customised: Yes



This itinerary can be customised to suit you perfectly. We can add more days, remove days, change accommodations, mix it up, add activities to suit your interests or simply design and create something from scratch. Call us today to get your custom New Zealand itinerary underway.



Inclusions:

Includes: Late model rental cars

Includes: Fully inclusive rental car insurance (excess may apply)

Includes: Unlimited kms

Includes: Afterhours emergency support while touring

Included activity: Private Transfer Auckland Airport to your Auckland Accommodation with Tourcorp

Included activity: Electronic Travel Guide and In-Country Support App

Included activity: The Panorama Room 3-course Dinner with The Hermitage Hotel
Included activity: Big Sky Stargazing

Included activity: Glacier Explorers

Included activity: Dinner onboard the Christchurch Restaurant Tram

Included activity: Kai Safari with Amiki Cultural Food Tours

Included activity: Coast and Rainforest Full Day Tour with Bush and Beach - Lunch Included

Included activity: Dinner at the Sky Tower Orbit Restaurant

Included activity: Te Pā Tū Evening Māori Cultural Experience - Dinner Included

Included activity: Mountain Jade - Highlights Tour

Included activity: Eco Thermal Park Tour with Elite Adventures

Included activity: Air New Zealand flight Rotorua to Queenstown

Included activity: Everything Queenstown Private Tour with Remarkable Scenic Tours

Included activity: TSS Earnslaw Cruise and Walter Peak Gourmet BBQ Dinner

Included activity: Fiordland's Finest Combo FLY - CRUISE - HELI with The Helicopter Line

Included activity: Gondola and Premium Buffet Dinner Experience with Skyline Queenstown

: 13 breakfasts, 1 lunch, 2 dinners, 3 special dinners



Day 1



Private Transfer Auckland Airport to your Auckland Accommodation with Tourcorp

You will be met at the Auckland airport by the driver and transferred to your Auckland accommodation.

Welcome to Auckland

Kia ora! Welcome to Auckland, known in Māori as Tāmaki Makaurau. Auckland is New Zealand's vibrant "City of Sails," and the country's largest metropolitan area. Nestled between the Pacific Ocean and the Tasman Sea, it offers something for everyone. Surrounded by native bush, lush rainforests, and pristine beaches, Auckland is a haven for both adventurers and urban explorers. Wander through world-class museums and galleries in the city centre or enjoy a peaceful retreat at the Auckland Gardens, where stunning landscapes showcase New Zealand's diverse flora. Stroll along the lively waterfront to savour fresh seafood and international cuisine at the Viaduct restaurants. For an unforgettable perspective, ascend the iconic SkyTower, New Zealand's tallest structure, and take in panoramic views of the city and its picturesque islands.

SUGGESTED ACTIVITY - Harbour Sailing Dinner Cruise with Explore

This unique on-water sailing and dining experience is not to be missed while you're in Auckland. Enjoy smooth sailing on the Waitemata Harbour - then watch this photogenic city come alive with twinkling lights. Enjoy your meal as you sail around the beautiful Auckland Harbour taking in the view as the sun slowly sets. You'll be treated to canapes and a drink as you set off towards Westhaven Marina. To finish the evening off, savour your dessert course as you leisurely sail back to Auckland's vibrant Viaduct Harbour.

Your accommodation: The Hotel Britomart Auckland

Soulful, smart and contemporary, The Hotel Britomart welcomes guests to Britomart, the vibrant centre of downtown waterfront Auckland. Still and calm, the rooms and suites at The Hotel Britomart pair simple elegance with the luxury of tactile materials. The Hotel Britomart is at the centre of a dynamic nine-block precinct of plant-lined streets, historic warehouses and the city's best shopping and eating.



Day 2



Coast and Rainforest Full Day Tour with Bush and Beach - Lunch Included

Your full-day excursion takes you first to the Arataki Visitor Centre, the gateway to the Waitakere Ranges and a short drive from Auckland Central. Enjoy panoramic views extending from the Tasman Sea to the Pacific Ocean as you absorb the area's history and admire the magnificent traditional Māori carvings. Walk the regenerating rainforest where your experienced guide will detail local flora and fauna. Take in the giant tree ferns, and bubbling streams before venturing onto a wild west coast beach. Enjoy a picnic lunch before your eco-tour ends in an area of untamed original rainforest. Here, mature 200-300-year-old kauri trees have developed separately from the rest of the world for millions of years and this part of the rainforest is particularly rich in bird life due to a successful programme to eradicate pests.

Dinner at the Sky Tower Orbit Restaurant

Soaring high above Auckland you'll discover Orbit, a truly iconic New Zealand brasserie offering diners sensational views - and food to match. Situated at the top of Auckland's Sky Tower, the dining room rotates once every hour, providing a truly unique experience with amazing 360-degree panoramas of the city, the Hauraki Gulf and beyond. Orbit offers a modern dining experience in a relaxed, open atmosphere with a delicious kiwi-inspired a la carte menu that features the best local and seasonal produce. As New Zealand's only rotating restaurant offering 360-degree views, it's an unforgettable experience that never ceases to delight.

Your accommodation: The Hotel Britomart Auckland

Soulful, smart and contemporary, The Hotel Britomart welcomes guests to Britomart, the vibrant centre of downtown waterfront Auckland. Still and calm, the rooms and suites at The Hotel Britomart pair simple elegance with the luxury of tactile materials. The Hotel Britomart is at the centre of a dynamic nine-block precinct of plant-lined streets, historic warehouses and the city's best shopping and eating.

Meals included: Breakfast, Lunch



Day 3



Collect Rental Car

This tour's from price includes an intermediate-sized vehicle, setting you up for comfortable travels. Yet, we understand every adventure is unique! Feel free to select the perfect wheels from our incredible collection of rental cars, spanning from economy hatchbacks to premium SUVs.

Auckland to Pauanui

Leaving Auckland you will travel through rolling green Waikato countryside and across the Hauraki Plains. The drive will take you near the Firth of Thames, a haven for wildlife, in particular, the shorebirds at Miranda. Arriving in the historic gold town of Thames you then cross the Southern Coromandel Ranges and onto the scenic east coast of the peninsula, littered with white sandy beaches. The destination of Pauanui meaning "Big Paua" in Māori, lies at the mouth of the Tairua River on its south bank, directly opposite the larger town of Tairua.

Pauanui

Pauanui is a coastal gem located on New Zealand's Coromandel Peninsula. Known for its pristine beaches, lush native forests, and laid-back charm, Pauanui offers a slice of paradise for relaxation and adventure alike. Take in the golden sands, enjoy coastal walks, and explore local trails with breathtaking views of the Pacific. Pauanui is a haven for beach lovers, water sports enthusiasts, and anyone looking to experience New Zealand's stunning natural beauty

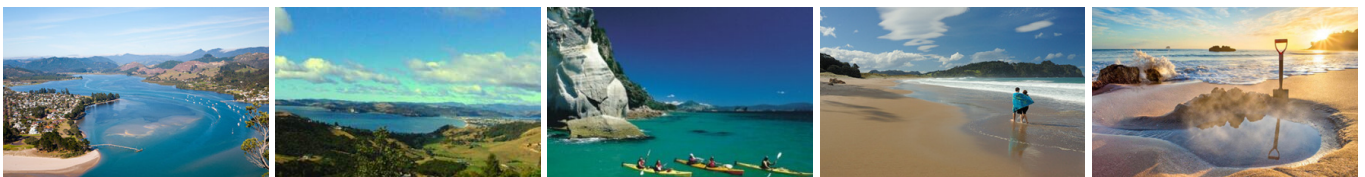
Your accommodation: Grand Mercure Puka Park Resort

Puka Park Resort is situated on the eastern side of the Coromandel Peninsula. Nestled amongst 25 acres of New Zealand's most beautiful native bush this prestigious hideaway offers luxury and seclusion at its best.

Meals included: Breakfast



Day 4



Pauanui to Hot Water Beach - Return Journey

North of Pauanui is the famous Hot Water Beach. Hot Water Beach derives its name from the geothermally heated water that seeps through the sands. At low tide, you can dig a hole and create your mineral hot pool. The beach itself is golden sand and is an ideal place to spend an afternoon at the seaside. A few cafes and art stores are also here, in particular, Moko Artspace which has a great range of local and Polynesian arts and crafts for sale.

SUGGESTED ACTIVITY - Nature & Coast Tour with Kiwi Dundee - Lunch Included

Experience the best of the Coromandel Peninsula on the Nature and Coast Tour, showcasing its scenic highlights and hidden local treasures. Stroll through lush forest trails to a historic gold cave sparkling with glowworms, and uncover the region's rich history, unique flora, and diverse fauna. Discover breathtaking coastal landscapes, including white sand beaches, towering beach caves, dramatic cliffs, and ancient Māori pā sites. The tour also includes a visit to the iconic Hot Water Beach and an exclusive look at fascinating local finds, such as gold specimens, petrified wood, and kauri gum.

Your accommodation: Grand Mercure Puka Park Resort

Puka Park Resort is situated on the eastern side of the Coromandel Peninsula. Nestled amongst 25 acres of New Zealand's most beautiful native bush this prestigious hideaway offers luxury and seclusion at its best.

Meals included: Breakfast



Day 5



Pauanui to Rotorua

Leaving Pauanui, head southwest to Hikurangi and Kopu, then follow the inland route south past the Kaima-Mamaku Forest Park. Finally, you will arrive in Rotorua. The region's geothermal activity becomes evident as you see steam rising from the roadside and surrounding hills. Considered the cultural centre for the Māori people, Rotorua is the ideal place to gain an insight into the history and culture. Visit the local museum located in the government gardens or the Rotorua Night Markets for a delicious meal. Of course, Rotorua is also a great place to enjoy many other activities including, fishing, 4WD trips, relaxing spa treatments, mountain biking, walking, hiking, helicopter and floatplane trips.

Rotorua

Discover the geothermal, adventure, and cultural wonderland of Rotorua. As you explore, you may see steam rising from cracks in the road, bubbling and hissing water in pools along the lake's edge, and the unmistakable smell of Sulfur. Rotorua is rich in Māori culture and history, with many Māori inhabitants recognising the great potential of the volcanic land. For an outdoor adventure, head to The Redwoods and experience the rainforest treetops from high up. There are a few accessible trails for disabled hikers and great biking trails as well. If you're lucky, you might spot some of New Zealand's native birds, such as the Piwakawaka (Fantail) and the Tūī. Alternatively, enjoy the Lake Tikitapu Blue Lake Walk or explore Kuirau Park, where you'll find bubbling mud pools and steaming lakes. Don't miss the private thermal reserves such as Te Puia and Wai-O-Tapu, where you can walk among bubbling mud pools, spouting geysers, and Sulfur ponds. Just a few minutes from the town centre, the Agrodome and National Kiwi Hatchery offer an insight into nature. Rotorua's rich Māori culture is a must-see. Spend an evening with Te Pā Tū, complete with a traditional-style dinner or stroll along the lake edge to reach one of the country's oldest Māori villages at Ohinemutu. When hunger strikes, visit Eat Street in Rotorua CBD, a vibrant street lined with delicious eateries and restaurants to satisfy any craving. No visit to Rotorua would be complete without experiencing Rotorua's original tourist attraction - a relaxing spa treatment. This town boasts an array of wellness experiences to unwind in. Whether you are seeking adventure, culture, or relaxation, Rotorua offers an unforgettable experience.

Te Pā Tū Evening Māori Cultural Experience - Dinner Included

New Zealand's Most Awarded Cultural Attraction, presenting Te Pā Tū. Feast on song, drama, tradition, and divine seasonal kai (cuisine) within the forest Pā (village) blanketed by towering Tawa trees, blazing bonfires, and a forest-formed amphitheatre. Te Pā Tū shares Māori history, traditions, and cultural aspirations across 4-hours of celebration and feasting. These events change with each season of the Maramataka, the Māori lunar calendar.

Your accommodation: On the Point

On the Point is a beautiful lodge accommodation in a stunning location and offering panoramic views. It also offers gourmet New Zealand food and wine, as well as a range of on site activities from pampering massage, fly fishing from the private beach, water sports, tennis, gym and boating and is only 10 minutes from the heart of Rotorua.

Meals included: Breakfast, Speciality Dinner



Day 6



Eco Thermal Park Tour with Elite Adventures

Experience it all on the ultimate volcanic and geothermal Rotorua tour. Discover vibrant hot springs, erupting geysers, bubbling mud pools, majestic volcanoes, and lush native forests on this fully guided half-day adventure. Journey through scenic forestry and farmland to Wai-O-Tapu, home to New Zealand's largest boiling mud pool and a series of dazzling hot springs. Witness the dramatic eruption of the Lady Knox geyser before heading to the Waimangu Volcanic Valley. Here, your guide will share the fascinating story of the Mt Tarawera eruption that shaped this spectacular geothermal wonderland.

Mountain Jade - Highlights Tour

This 30-minute highlights tour is a rare opportunity to spend time with New Zealand Jade artists. New Zealand Jade known as Greenstone, but more commonly known in New Zealand as Pounamu has a rich history within Maori culture. The expert guide will show you the intricate process of Pounamu carving firsthand in the Mountain Jade studio. The local artist will be there to personally demonstrate the carving process and share their stories and knowledge with you. To top off the tour, you will get to select your very own piece of Pounamu and learn to string it yourself so you can take it home.

SUGGESTED ACTIVITY - Polynesian Spa Lake View Private Pool

The geothermal mineral waters of the Polynesian Spa in Rotorua are sought after the world over as one of the top 10 spas in the world. Indulge your need for a little luxury and enjoy some time in a Private Deluxe Pool, with stunning 360 degree views over Lake Rotorua, you will be left in peace to soak your cares away. Alkaline geothermal spring water pools are 38.5 °C and 0.7m deep. Available for blocks of 30 minute hire with a minimum of two adults, this is the perfect activity to enjoy a relaxing afternoon with your partner.

Your accommodation: On the Point

On the Point is a beautiful lodge accommodation in a stunning location and offering panoramic views. It also offers gourmet New Zealand food and wine, as well as a range of on site activities from pampering massage, fly fishing from the private beach, water sports, tennis, gym and boating and is only 10 minutes from the heart of Rotorua.

Meals included: Breakfast



Day 7



Return your vehicle to Rotorua Airport

Return your rental car to Rotorua Airport to continue your onward journey.

Air New Zealand flight Rotorua to Queenstown

Collect Rental Car

This tour's from price includes an intermediate-sized vehicle, setting you up for comfortable travels. Yet, we understand every adventure is unique! Feel free to select the perfect wheels from our incredible collection of rental cars, spanning from economy hatchbacks to premium SUVs.

Welcome to Queenstown

Renowned for its adrenaline inducing activities Queenstown is synonymous with adventure. Parked on the shores of Lake Wakatipu this small alpine town is nestled below soaring vistas of The Remarkables Mountain Range. While arguably the brightest gem in New Zealand's crown, Queenstown offers far more than an action-packed getaway. Spend time on the Gibbston wine trail and end with a meal at Michelin star chef Josh Emett's restaurant, Rata. Take a trip down memory lane on a 100 year old steamship the TSS Earnslaw. Soak in the scenery on your walk around the lake, or venture further afield into Fiordland National Park. Head over the hill to resort town Wanaka, or re-live scenes from Lord Of The Rings by four wheel drive. But - if you really do want that rush - head out on the Shotover Jet, dive off the Nevis Bungy, freefall on the Canyon swing or Zip line the Gondola. Just be sure it's done on an empty stomach & don't say we didn't warn you!

Your accommodation: Queenstown Park Boutique Hotel

Queenstown Park Hotel is a boutique hotel with a modern romantic style in the heart of New Zealand's adventure capital. Set in peaceful parkland, savour views of Queenstown's majestic mountains. Enjoy easy access to the vibrant town centre where shopping, cafes and nightlife nestled on the shores of spectacular Lake Wakatipu.

Meals included: Breakfast



Day 8



Everything Queenstown Private Tour with Remarkable Scenic Tours

Visit Queenstown's most popular and iconic landmarks in this incredible private experience with Remarkables Scenic Tours. Take off with your guide and journey to Arrowtown to explore the Chinese Village, with time to explore the shops and relax. If you enjoy wine, get taken to a winery in the Gibbston Valley, Central Otago's premier wine region, stopping at the best photo locations along the way. Learn about history and culture, discover hidden gems and listen to captivating stories from your local and knowledgeable guide.

SUGGESTED ACTIVITY - Shotover Jet Canyon Jet Boat Ride

Shotover Jet is the only company permitted to operate in the Shotover River Canyons. It's a thrilling ride! Skim past rocky outcrops at close range in your Shotover Jet 'Big Red', as you twist and turn through the narrow canyons at breathtaking speeds. And a major highlight - hold tight for the world-famous Shotover Jet full 360-degree spins!

TSS Earnslaw Cruise and Walter Peak Gourmet BBQ Dinner

Enjoy a quintessential Kiwi experience, a delicious gourmet BBQ buffet meal, and a farm demonstration in a stunning lakeside setting. Take in the stunning views of Lake Wakatipu and its surroundings as you cruise across the lake to the historic Walter Peak high country farm aboard the TSS Earnslaw Steamship. Enjoy the ambiance of the heart of the stately homestead while your Colonel's Homestead Restaurant chef prepares a gourmet BBQ dinner. Your seasonal menu includes an extensive selection of local New Zealand produce, including succulent meats and a selection of delicious vegetables and salads. Complete your meal with your choice of delicious desserts, or New Zealand cheeses. After dinner, watch the farm dogs in action with a sheep-herding demonstration and say hello to the other farm animals. Finally, cruise home under the southern stars and enjoy the fresh night air as the lights of Queenstown draw ever closer.

Your accommodation: Queenstown Park Boutique Hotel

Queenstown Park Hotel is a boutique hotel with a modern romantic style in the heart of New Zealand's adventure capital. Set in peaceful parkland, savour views of Queenstown's majestic mountains. Enjoy easy access to the vibrant town centre where shopping, cafes and nightlife nestled on the shores of spectacular Lake Wakatipu.

Meals included: Breakfast, Speciality Dinner



Day 9



Fiordland's Finest Combo FLY - CRUISE - HELI with The Helicopter Line

Experience Milford Sound / Piopiotahi by taking to the skies in two different types of aircraft: one way by fixed-wing plane and the other by helicopter. This adventure includes a stunning 2-hour cruise and is a bucket list experience not to be missed!

Skyline Gondola Queenstown and Premium Buffet Dinner Experience

With breathtaking views across Queenstown and Lake Wakatipu, the Skyline Complex is a must-do. Catch the fully enclosed gondola to the summit for a remarkable panorama of the city surrounds. Wander the outdoor viewing decks then enjoy a gourmet buffet meal in the Stratosphere Restaurant.

Your accommodation: Queenstown Park Boutique Hotel

Queenstown Park Hotel is a boutique hotel with a modern romantic style in the heart of New Zealand's adventure capital. Set in peaceful parkland, savour views of Queenstown's majestic mountains. Enjoy easy access to the vibrant town centre where shopping, cafes and nightlife nestled on the shores of spectacular Lake Wakatipu.

Meals included: Breakfast, Speciality Dinner



Day 10



Queenstown to Aoraki-Mt Cook National Park

Depart Queenstown and head through the Kawarau Gorge and over the historic Kawarau Bridge, a popular bungee jumping location. Choose to participate in this daredevil sport or watch others instead. Continue through Gibbston home to some of the best wines in the country. Follow the gorge to arrive in Cromwell, known for its many fruit orchards. Cromwell was completely submerged when the Clyde Dam was built and Lake Dunstan was established in 1992, the remnants of the old Cromwell town provide a unique snapshot into the history of this area. Head over through the Lindis Pass, one of New Zealand's highest roads, with the summit reaching 971 metres. Its tussock-covered hills are a barren but beautiful sight as you descend into the Mackenzie Basin. You'll go through the towns of Omarama and Twizel, the last stops before you arrive at Lake Pukaki and take the Aoraki-Mt Cook Highway to arrive in the small village

Aoraki-Mt Cook National Park

At 3754m Aoraki-Mt Cook is Aotearoa-New Zealand's highest mountain, located deep in the heart of the Southern Alps. As well as its impressive beauty, Aoraki-Mt Cook National Park is also home to a huge range of awe-inspiring sights and activities. Take to the air with Mt Cook Ski Planes for a scenic flight that includes a glacier landing. At around 27 kilometres long the Tasman Glacier is New Zealand's longest and a Glacier Explorers tour allows you to see its unique features up close.

There are many short hikes in and around the park and these are well signposted around the village. Those with an interest in the night sky should take a Big Sky Stargazing tour with the Hermitage Hotel. The region is considered to have one of the clearest night skies in the world and is one of the few gold-rated dark sky reserves worldwide.

Visit the Sir Edmund Hillary Alpine Centre for insight into this region's mountain climbing history. You'll also learn of Sir Ed's incredible achievements and his dedication to helping others around the world.

The Panorama Room 3-course Dinner with The Hermitage Hotel

Since first opening its doors in 1969, The Panorama Room has gained a reputation as being one of the best restaurants in New Zealand. This reputation is reflected in the numerous awards the restaurant has received over the years. A simple philosophy of using just the freshest, local ingredients, in particular from New Zealand's South Island, is still the secret to its success today. The menu has a strong international influence and reflects both the establishment's taste and the fact that most of the chefs have travelled and worked widely throughout the world.

Your accommodation: Hermitage Hotel, Aoraki Wing Premium

The Hermitage Hotel ringed by magnificent snow-capped peaks of the Southern Alps, is a world-renowned tourist destination and has been an icon of superior accommodation and dining since 1884.

Meals included: Breakfast, Dinner



Day 11



Glacier Explorers

Experience 500-year-old icebergs up close on the Aoraki-Mt Cook terminal lake. The Glacier Explorers tour is the only one of its kind in New Zealand and one of only three in the world! Very few glaciers terminate into lakes and even fewer of them are accessible. See towering ice cliffs and floating icebergs from the safety of a specially designed boat. These boats provide a safe way to view unseen and inaccessible areas of New Zealand's largest glacier The Tasman.

Walking Track in Aoraki-Mt Cook National Park

Aoraki-Mt Cook Village offers a variety of short scenic walks suitable for all ages and fitness levels. Start your adventure at the Department of Conservation Information Centre, where you can learn about track conditions, local history, and the area's wildlife. Here are a few popular walks to explore: Bowen Bush Walk: 10-minute return Glencoe Walk: 10-minute return Red Tarns Track: 2-hour return Kea Point Walk: 2-hour return Sealy Tarns Track: 3 - 4 hours return

Big Sky Stargazing

Mt Cook is far from the city lights and therefore has some of the darkest skies in New Zealand, perfect for viewing the night sky! Their fully trained guides are delighted to show you the beautiful southern night sky using the naked eye, state-of-the-art astronomy telescopes, and binoculars at the outdoor viewing platform. If the weather is not favourable, then there will be an indoor alternative featuring New Zealand's first full-dome digital Planetarium, high-definition video images on a suspended 9m wide x 4.5m high full dome. Unleash your imagination as you discover the night sky, including the Southern Cross, seasonal ecliptic objects, planets, star clusters, moons, distant galaxies, and even our very own galaxy, the spectacular Milky Way!

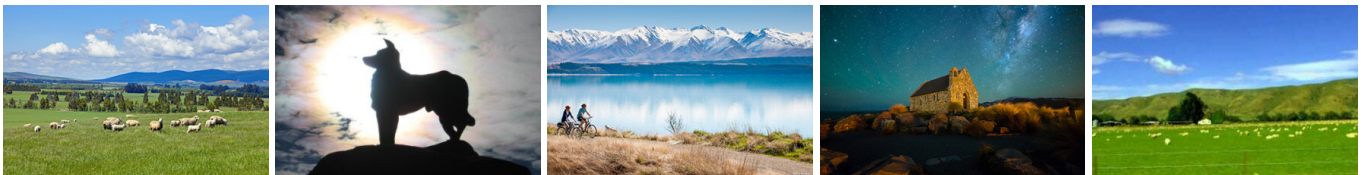
Your accommodation: Hermitage Hotel, Aoraki Wing Premium

The Hermitage Hotel ringed by magnificent snow-capped peaks of the Southern Alps, is a world-renowned tourist destination and has been an icon of superior accommodation and dining since 1884.

Meals included: Breakfast, Dinner



Day 12



Aoraki-Mt Cook National Park to Christchurch

Leaving Aoraki Mt Cook National Park, travel a short distance for a stop at the visitor centre on the southern shores of Lake Pukaki. Learn about the formation of the region and take in the spectacular views of Aoraki-Mount Cook. Along the way you'll come to Lake Tekapo which also displays the same reflective qualities as Lake Pukaki, making the waters bright turquoise. It's a great place to take a scenic flight, soak in a hot spring or just marvel at the magnificent views. From here you travel through Burkes Pass and into the rich farming valley that surrounds Geraldine. Continue across the vast Canterbury Plains to Christchurch.

Christchurch

Christchurch known in Māori as Ōtautahi, is the largest metro area in the South Island. Commonly referred to as New Zealand's "Garden City", Christchurch is home to one of the biggest public parks in the country, and beautiful botanic gardens. The city was hit with devastating earthquakes in 2010 and 2011, now the city crosses the line between its English heritage and a new modern architecture. To take in some arts and culture, pay a visit to the Canterbury Museum or the Christchurch Art Gallery. Take a step back in time with a tram around the city or punt along the Avon River. If tasting your way around the city is your means of travel, try out a cultural eating tour. A short drive from the CBD will lead you to the outskirts of the Banks Peninsula beachside suburb of Sumner or through the tunnel to Lyttleton Harbour which hosts fantastic markets on Saturday mornings.

Dinner onboard the Christchurch Restaurant Tram

A truly unique dining experience in the heart of Christchurch. You'll board New Zealand's only dining tram for an unforgettable moving four-course restaurant experience. Enjoy a curated fine dining-style menu while taking in the city sights on your journey through the streets of central Christchurch. This experience includes a meal with multiple courses as the tramway route passes New Regent Street, the Avon River, High Street, and Victoria Square.

Your accommodation: Hotel Montreal

A true original, Hotel Montreal is a unique, luxury escape in the heart of Christchurch city. Hotel Montreal is often recognised for the five-star comfort and convenience it affords those passing through the Garden City.

Meals included: Breakfast



Day 13



Christchurch Botanic Gardens - suggested activity

Located just 15 minutes from the city center, Christchurch's 75-acre Botanic Gardens boast the finest collection of exotic and indigenous plants in New Zealand. This impressive collection creates a tranquil oasis, with spring daffodils, stunning summer roses and herbaceous borders, vibrant autumn foliage, and cozy conservatories to warm up in during winter. There's something to enjoy in every season. The New Zealand Garden also offers a unique glimpse into the country's wilderness, providing a peaceful escape throughout the year.

Art in Christchurch

Christchurch is a city brimming with art, from exhibitions and galleries to vibrant street art throughout the city. While you're here, take time to explore the city's rich artistic offerings, starting with the Christchurch Art Gallery Te Puna o Waiwhetū. With a diverse range of works on display, from old masters to contemporary art, there's something for everyone. The gallery also hosts regular events, including talks, museum tours, and film screenings. Don't miss The Arts Centre Te Matatiki Toi Ora, a vibrant hub for arts, culture, education, creativity, and entrepreneurship. This collection of heritage buildings houses museums, boutique galleries, eateries, retailers, and offices. Beyond the conventional galleries, the city's streets are an open-air art gallery. Christchurch has gained a strong reputation as the home of street art, with colorful murals from inspiring artists appearing across the inner city. Be sure to look out for the ever-evolving street art, including the Riverside Mural, Rauora Park's spray cans, and the urban aesthetics of the YMCA building.

Kai Safari with Amiki Cultural Food Tours

Immerse yourself in the vibrant atmosphere of the new city while exploring its emerging foodie scene. Learn about the lives of early Māori and their contemporary lifestyle. Uncover hidden gems and hear stories of how Ōtautahi-Christchurch envisions the future. Enjoy visits to beloved modern New Zealand restaurants, where you can sample seasonal shared plates made from local produce. Indulge in new favourite dishes, savouring a variety of local food and beverages, each with its own unique story that highlights the region's offerings..

Your accommodation: Hotel Montreal

A true original, Hotel Montreal is a unique, luxury escape in the heart of Christchurch city. Hotel Montreal is often recognised for the five-star comfort and convenience it affords those passing through the Garden City.

Meals included: Breakfast



Day 14



Return Your Vehicle to Christchurch Airport

It's time to return your rental car and let the South Island journey come to an end. If time allows spend the day exploring more of Christchurch, we'd suggest a leisurely drive up the Port Hills for some great sites and then over to the harbour of Lyttleton, before circling through the tunnel and back to the airport to continue your journey home.

Farewell from Aotearoa-New Zealand

Bid farewell to New Zealand, taking with you unforgettable memories of its breathtaking landscapes and incredible adventures. In Maori, it is said mā te wā, which is not goodbye, it is see you soon!

Tour details

Departures:	Daily
Tour type:	Self Drive Tour (FTNZ ONLY)
Starts:	Auckland
Finishes:	Christchurch
Tour length:	14
Accommodation:	Boutique Lodges & Hotels
Car/transport type:	

Included activities

Includes	All breakfasts
Includes	4 dinners
Includes	Private airport transfers
Includes	Air New Zealand Airfare Rotorua to Queenstown
Includes	Coast and Rainforest full day tour, Auckland
Includes	Mitai Maori Village Concert & Buffet Dinner, Rotorua
Includes	Glacier Explorers Tour, Mt Cook National Park
Includes	TSS Earnslaw cruise and dinner at Walter Peak high country farm, Queenstown
Includes	Dart River Wilderness Safari, Glenorchy

Accommodation summary

Day 1	The Hotel Britomart Auckland
Day 2	The Hotel Britomart Auckland
Day 3	Grand Mercure Puka Park Resort
Day 4	Grand Mercure Puka Park Resort
Day 5	On the Point
Day 6	On the Point
Day 7	Queenstown Park Boutique Hotel
Day 8	Queenstown Park Boutique Hotel
Day 9	Queenstown Park Boutique Hotel
Day 10	Hermitage Hotel, Aoraki Wing Premium
Day 11	Hermitage Hotel, Aoraki Wing Premium
Day 12	Hotel Montreal
Day 13	Hotel Montreal